



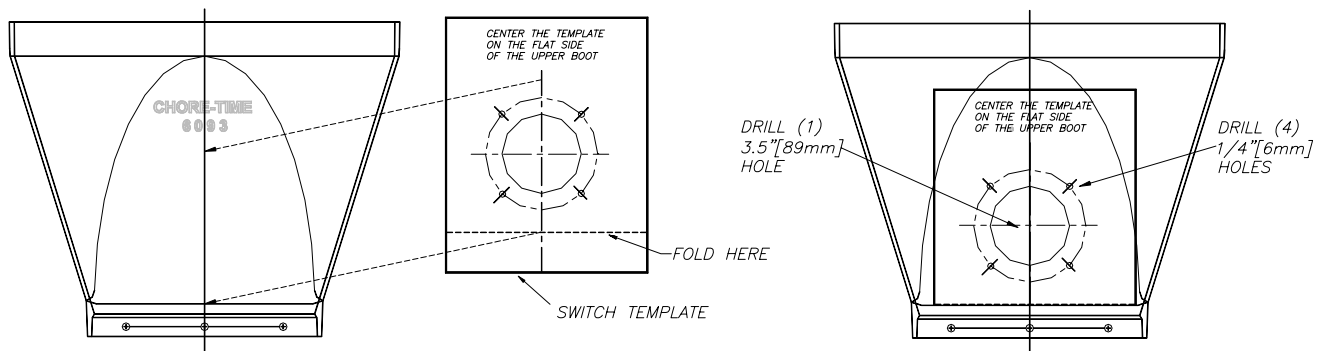
SENSOR PLUS™ Panel Switch Part Number 46910

Introduction

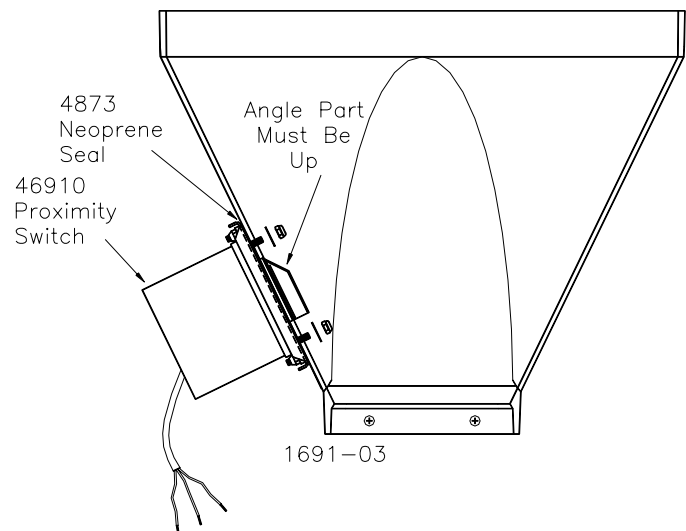
The SENSOR PLUS™ Panel Switch has numerous applications. It can be utilized as a level switch to shut off a fill system motor if the feed bin runs empty of feed. It can also be utilized as a level switch in feed screener applications to replace mechanical version switches (see wiring in cage screener manual). See Auto Bin Slide instruction for applications operating automatic bin slide actuators.

Installation

1. Using the provided template, mark and drill the holes for the panel switch.



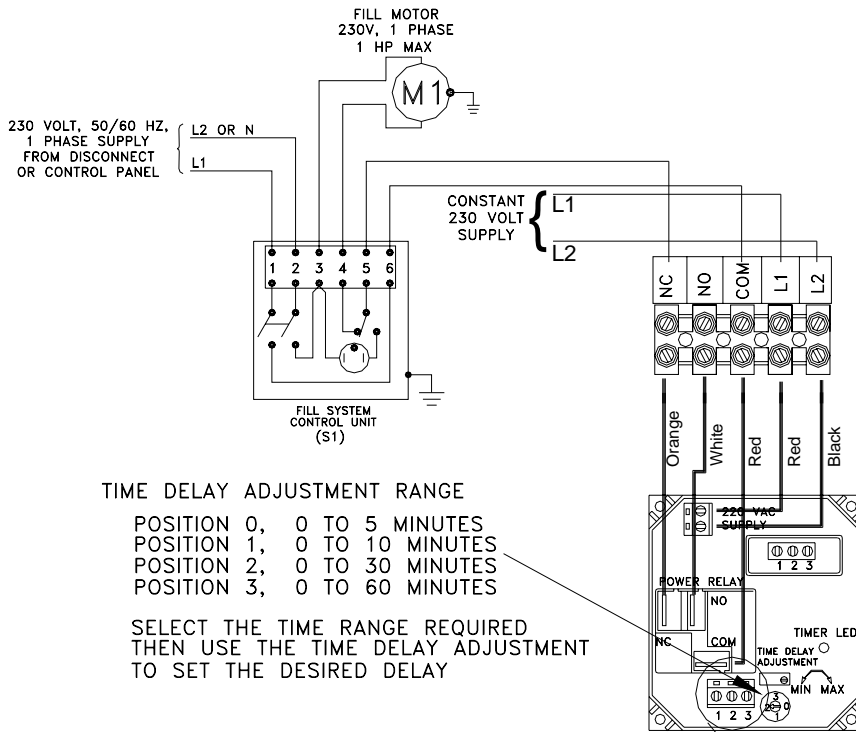
2. **Proximity Switch installation:** Assemble the 4873 Neoprene seal onto the switch unit and insert the (4) switch studs through the holes that were just drilled in step 1. Assemble the (4) washers and (4) nuts on the inside of the upper boot. Note: The angle part of the red switch must be on tip when mounting the upper boot. Tighten nuts securely.
3. Wire the switch, *All wiring must be done by a qualified electrician in accordance with local and national codes.*



Wiring Diagram

All wiring must be done by a qualified electrician in accordance with local and national codes.

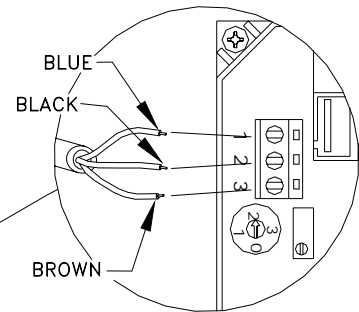
Panel switch used as feed bin level switch



TIME DELAY ADJUSTMENT RANGE

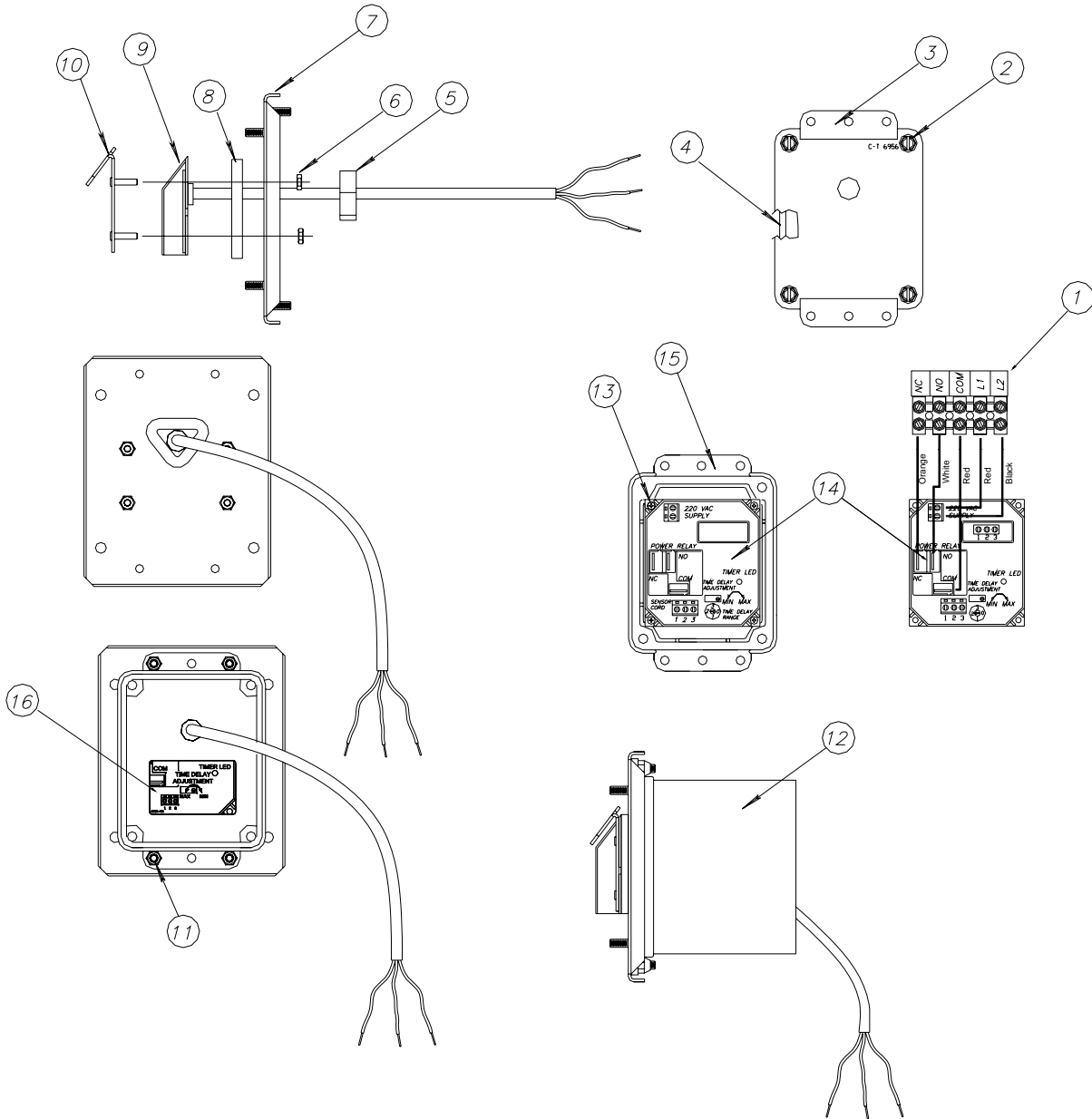
- POSITION 0, 0 TO 5 MINUTES
- POSITION 1, 0 TO 10 MINUTES
- POSITION 2, 0 TO 30 MINUTES
- POSITION 3, 0 TO 60 MINUTES

SELECT THE TIME RANGE REQUIRED
THEN USE THE TIME DELAY ADJUSTMENT
TO SET THE DESIRED DELAY



SENSOR CONNECTING DETAIL

46910 SENSOR PLUS™ Panel Switch Parts List

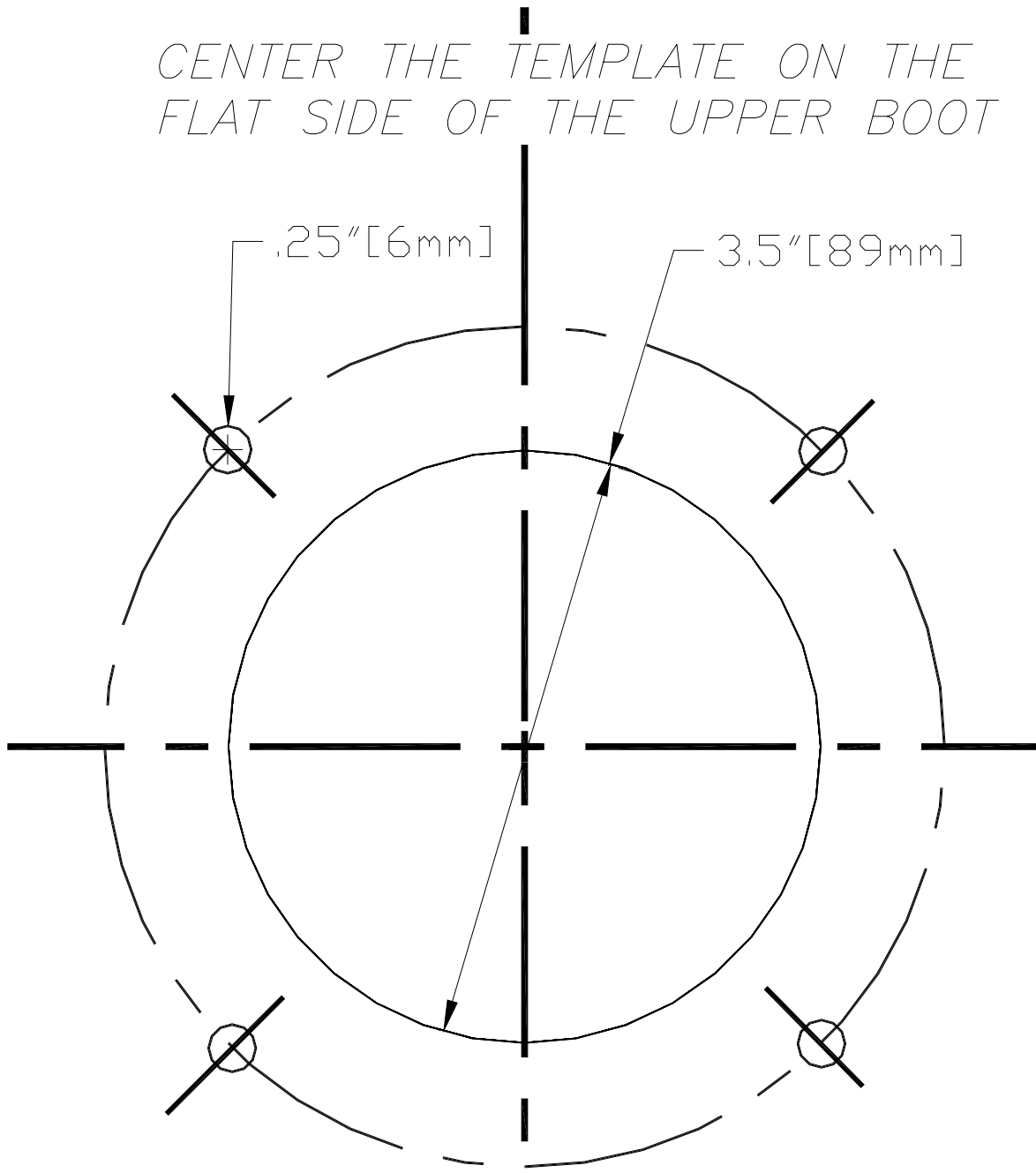


Item	Description	Part No.
1	Terminal Strip	34925-5
2	#10 Hex Washer Head Screw	28075
3	Terminal Box Cover	46912
4	Switch Box Gasket	6777
5	Gasket	6968-1
6	#6-32 Hex Nut	771
7	Switch Box Mount	46911
8	Sensor Spacer	46546

Item	Description	Part No.
9	Sensor Level Switch	48579
10	Sensor Retainer	51055
11	#10-32 Lock Nut	6963
12	Box	42610
13	Screw	35493
14	Sensor Level Switch	48579
15	Cover	6956
16	Decal	2526-409

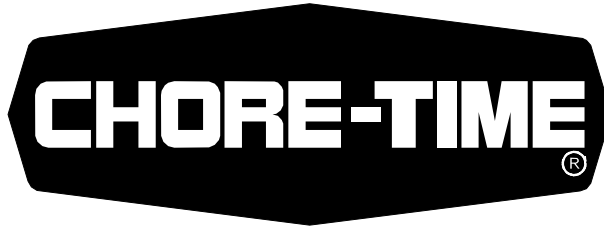
This page left blank for notes.

*CENTER THE TEMPLATE ON THE
FLAT SIDE OF THE UPPER BOOT*



1691-04

FOLD HERE



MADE TO WORK.

BUILD TO LAST.®

Contact your nearby Chore-Time distributor or representative for additional parts and information.

CTB Inc.
P.O. Box 2000 • Milford, Indiana 46542-2000 • U.S.A.
Phone (574) 658-4101 • Fax (877) 730-8825
E-mail: poultry@choretime.com • Internet: www.choretimepoultry.com

Printed in the U.S.A.