

2912 Hopper Level Control

INTRODUCTION

The #2912 Hopper Level Control is designed for use with any conveying system that carries free flowing feed. The Control automatically starts and stops the fill system as the feed level against the paddle changes.

The #2912 Control may be used with or without the high differential shield. The shield increases the feed differential of the Control by approximately 5 inches, to reduce short cycling of the delivery system motor.

If the delivery system operates on demand, without a time clock, another hopper may empty faster than the last one. It may be necessary to install a second #2912 Control in the other hopper to insure an ample feed supply. Wire the two Controls in parallel so that either can start the fill system

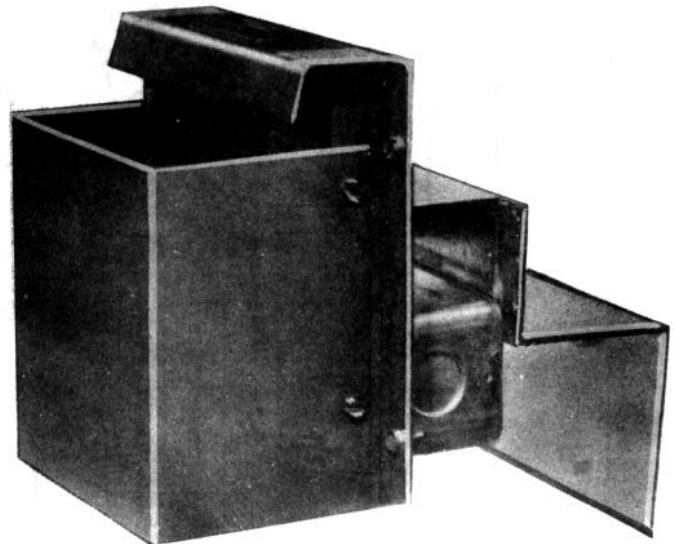


Figure 1. #2912 Hopper Level Control

INSTALLATION

Install the Control in the last hopper which is located at the end of the delivery system. Mount it low so that the feed level will be lower in that hopper than in the others. The lower feed level will cause the system to start frequently enough to maintain feed in every hopper. Position the feed drop tube to deliver feed into the center of the hopper in front of the paddle. Position the drop tubes in the other hoppers high so that they fill up but do not overflow.

Mount the Hopper Level Control vertically, as shown in Fig. 1, to assure free movement of the switch paddle. Drill two 9/32" holes at the desired location. Use the bracket as a guide to determine the hole spacing. Fasten the bracket in place with the hardware supplied. Install the Control in the mounting bracket assembly. The Control may be removed for switch adjustment or for house clean out.

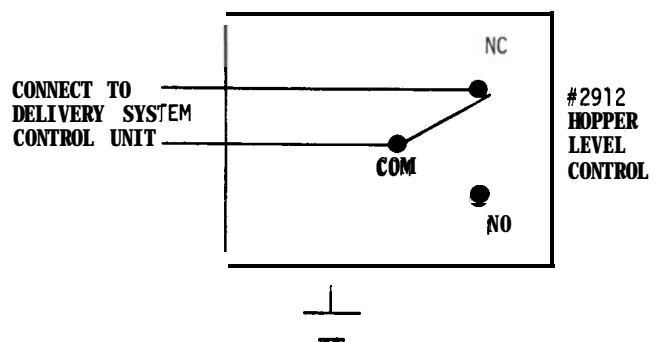
SWITCH ADJUSTMENT

1. Remove the two hex bolts from this bracket.
2. Turn hex nut counter-clockwise 1 complete turn.
3. Turn hex nut clockwise until switch clicks.
4. Turn hex nut counter-clockwise until switch clicks again.
5. Turn hex nut counter-clockwise 1/4 turn.

A WARNING

DISCONNECT POWER BEFORE
INSPECTING OR *servicing*
THE EQUIPMENT

Figure 2. Hopper Level Control Wiring

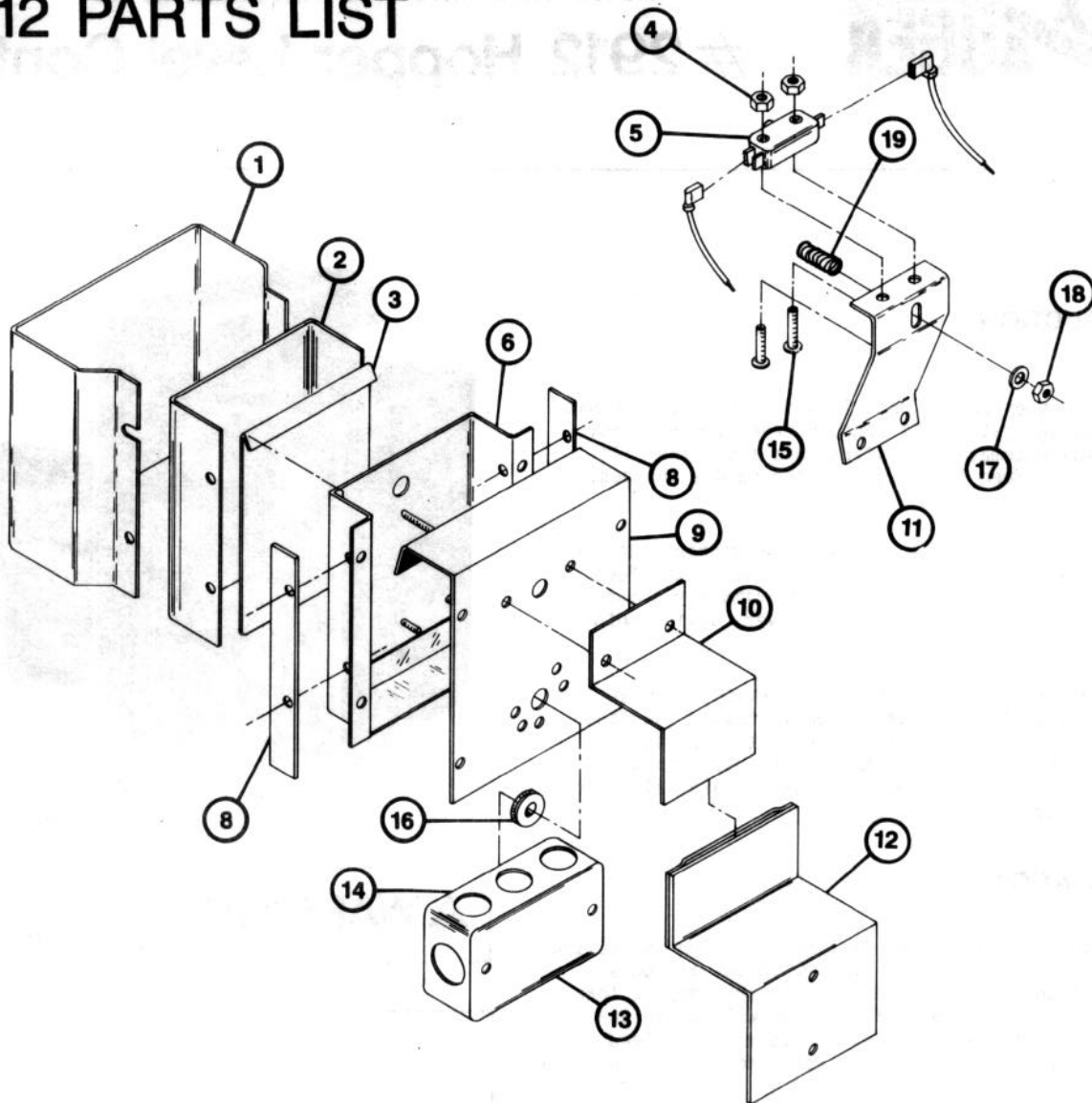


The #2912 Hopper Level Control is a single pole - double throw switch with wiring leads connected so that the circuit is complete (closed) when there is no feed against the paddle; and the circuit is broken (open) when there is feed against the paddle.

Switch Rating:

15 Amp 125-250 V. A. C.
3/4 hp. 125 V. A. C.
1-1/2 hp. 250 V. A. C.

2912 PARTS LIST



<u>Key</u>	<u>Description</u>	<u>Part No.</u>
1	High Differential Shield	24993
2	Paddle Cover	2708
3	Paddle	2709
4	6-32 Hex Nut	771
5	SPDT Switch	2702
6	Frame	2711
8	Fabric Retainer	2705
9	Back	2707
10	Mounting Bracket	2703
11	Switch Bracket	24991
12	Mounting Bracket Assembly	2911
13	Cover	711
14	Handy Box	1145
15	6-32 x 7/8 Screw	1921
16	Grommet	24
17	Flat Washer	2955-19
18	10-32 Crown Lock Nut	6963
19	Spring	24992

All parts should be ordered by PART NUMBER and DESCRIPTION as given in the PARTS LIST. Parts are always billed when shipped. If returned parts are defective, and within warranty period, credit will be allowed against billing.

Contact your nearby CHORE-TIM distributor or representative for additional information or parts.

Chore-Time Equipment, A Division of **CTB**, Inc.
P.O. Box 2000, Milford, Indiana 46542-2000 U.S.A.

Printed in U. S. A.