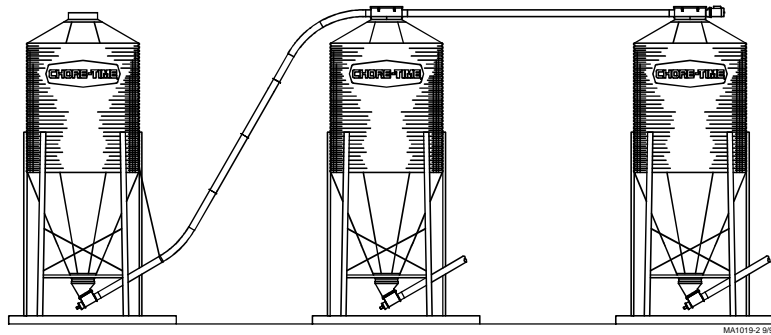




Single and Twin Intermediate Fill Cap Kits Model 108



Introduction

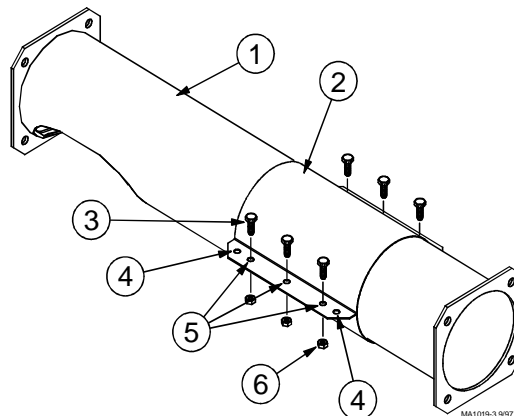
The Single or Twin Intermediate Fill Cap Kits replace the existing lid on top of an Intermediate Bin in a multiple bin fill system.

The Intermediate Fill Cap Kits include a removable lid. This allows the bin to be filled from a feed truck, etc., without disrupting the bin fill system. The Intermediate Fill Cap Kits allows the bin to be filled or bypassed by the fill system.

Installation

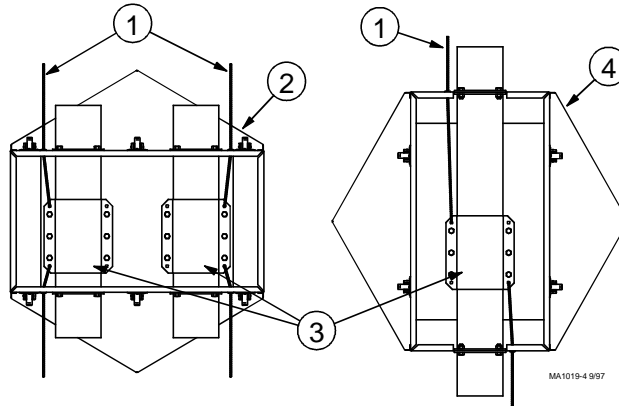
Refer to the parts list drawing on page 3 as required for assembly.

1. Place the Sponge Tubing over the lip of the bin opening.
2. Assemble the Anchor Tube Weldments to both ends (single), or both sides (twin), of the Cover Weldment using existing hardware on the ends of the fill tubes. Caulk or silicone the Anchor Tube Weldments against the Cover Weldment.
3. Assemble the Shut-Off using (6) 1/4-20 bolts and nuts provided into (3) center holes on each flanged side. This leaves the end holes for activator cord attachment.



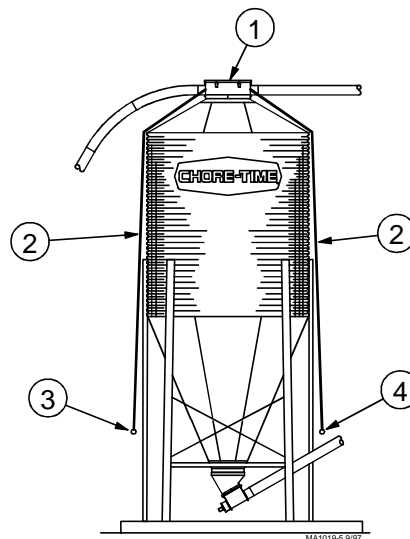
Item	Description	Part No.
1	Fill Tube Weldment (Twin) Fill Tube Weldment (Single)	40522 40523
2	Shut-Off Half	40530
3	1/4-20 x 1/2 Bolt	1487
4	Possible Cord Position	
5	Bolt Locations	
6	1/4-20 Lock Nut	1269

4. Set the cover weldment over the bin opening in line with the other bins. **The outlet hole in the fill tube (inside the cover weldment) should be on the inlet side of system.** This allows feed to fall more centered in the bin.
5. Determine proper pull cord arrangement for the hopper bin set up. Insert cord thru bushings on both ends (single) or sides (twin) and attach to opposite ends of the shut-off slide. Insert cords thru holes provided on ends of shut-off and tie a secure knot in cord ends.



Key	Description	Part No.
1	Cord	3085-8
2	Intermediate Fill Cap (Twin)	
3	Shut-Off	40530
4	Intermediate Fill Cap (Single)	

6. Attach red (closed side) and green (open side) indicator balls to the bottom ends of the cords. The cord should be routed over roof panels and side panels so as not to contact any sharp edges or hardware, and be able to be secured (tied off) to a leg or brace to hold slide in the open or closed position.



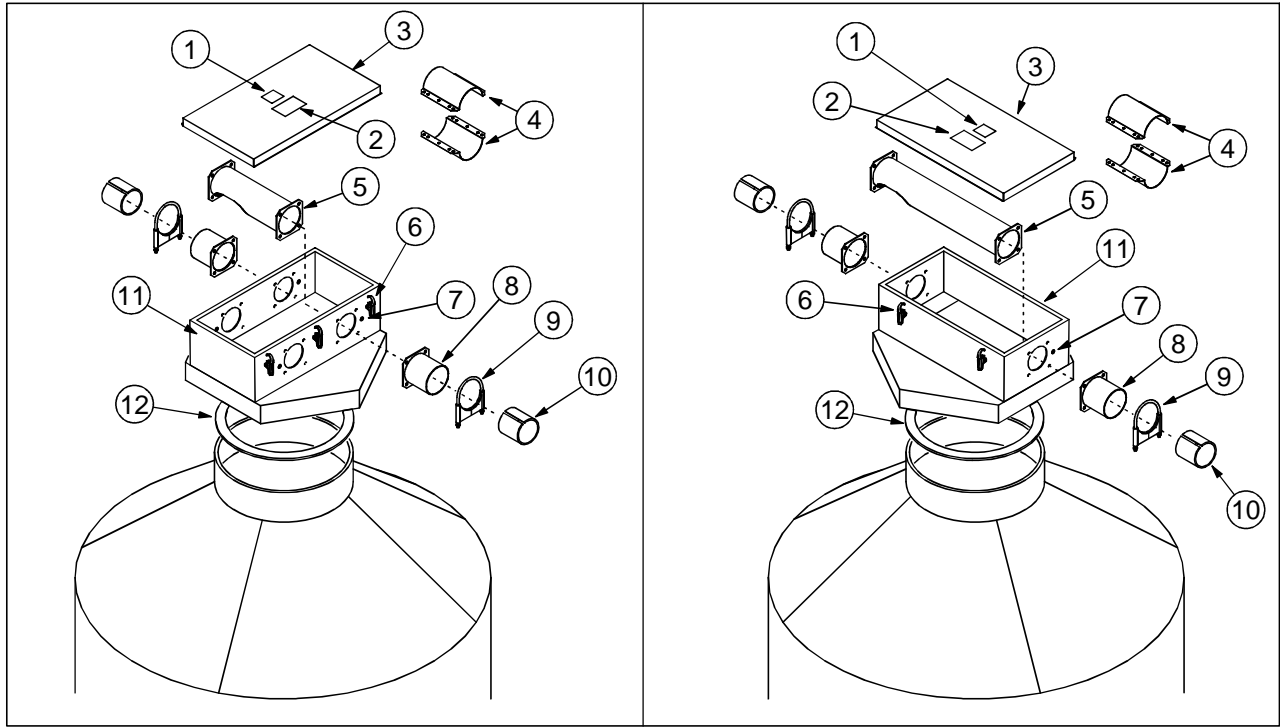
Key	Description	Part No.
1	Intermediate Fill Cap	
2	Cord	3085-8
3	Red Indicator Ball (Close)	24393-1
4	Green Indicator Ball (Open)	24393-2

7. Install the auger as specified in the fill system installation manual.
8. Set the Lid Assembly on the Cover Weldment and secure using the over center clamps.

Assembly Parts List

Twin Bin Intermediate Fill Kit Part No. 40526

Single Bin Intermediate Fill Kit Part No. 40527



MA1019-6 6/99

Key	Description	Part No.
1	Danger Electrical Decal	2527-25
2	Danger Moving Auger Decal	2527-9
3	Lid Assembly	7689
4	Shut-off Half	40530
5	Twin Tube Fill Weldment Single Tube Fill Weldment	40522 40523
6	Over Center Clamp	2536
7	Double Insulated Bushing	6343
8	Tube Anchor Weldment	4-37332
9	Tube Clamp	14373
10	Tube Insert	34337
11	Twin Cover Weldment Single Cover Weldment	40533 40534
12	Sponge Tubing	5928
--	Cord	3085-8
--	Red Indicator Ball	24393-1
--	Green Indicator Ball	24393-2



**Made to work.
Built to last.**

Revisions to this Manual

Page No.	Description of Change
3	Added Danger Electrical Decal and Danger Moving Auger Decal to Parts List

Contact your nearby Chore-Time distributor or representative for additional parts and information.

**CTB, Inc.
P.O. Box 2000
Milford, Indiana 46542-2000 U.S.A.
Phone (219) 658-4101 • Fax (800) 333-4191
E-Mail: ctb@ctbinc.com • Internet: <http://www.ctbinc.com>**

Printed in the U.S.A