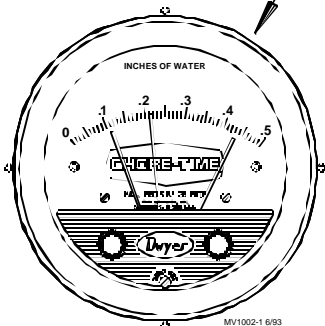


PHOTOHELIC/CIRCUIT BOARD REPAIR KIT

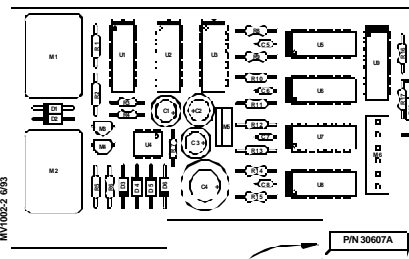
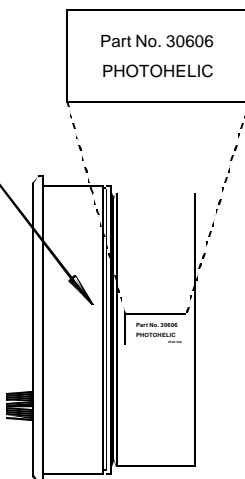
Important Notice: If either a p/n 24830 photohelic or a p/n 24076 circuit board become defective, both must be replaced with updated parts at the same time. Failure to do so will result in permanent damage to your Static Pressure Inlet Control.

The p/n 30407 Photohelic/Circuit Board Repair Kit includes both the updated Photohelic (p/n 30606) and the updated circuit Board (p/n 30607A). See below.

THE UPDATED PHOTOHELIC MAY BE IDENTIFIED BY THE PART NUMBER DECAL ON THE SIDE, AND BY THE CHORE-TIME LOGO ON THE FACE.



Part No. 30606
PHOTOHELIC



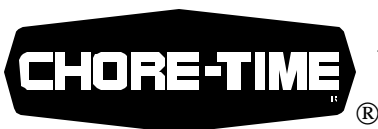
THE UPDATED CIRCUIT BOARD MAY BE IDENTIFIED BY THE PART NUMBER DECAL.

P/N 30607A

Contact your nearby Chore-Time distributor or representative for additional parts and information.

Chore-Time Equipment, A Division of CTB, Inc.
P.O. Box 2000, Milford, Indiana 46542-2000 U.S.A.

MV1002A-693

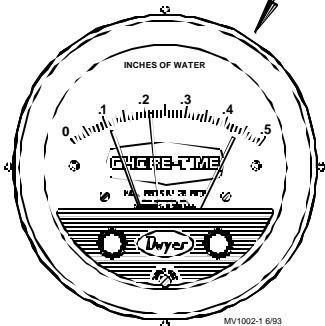


PHOTOHELIC/CIRCUIT BOARD REPAIR KIT

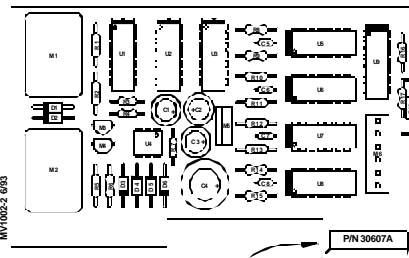
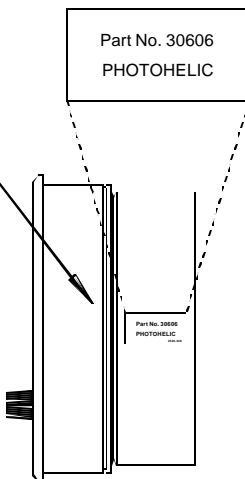
Important Notice: If either a p/n 24830 photohelic or a p/n 24076 circuit board become defective, both must be replaced with updated parts at the same time. Failure to do so will result in permanent damage to your Static Pressure Inlet Control.

The p/n 30407 Photohelic/Circuit Board Repair Kit includes both the updated Photohelic (p/n 30606) and the updated circuit Board (p/n 30607A). See below.

THE UPDATED PHOTOHELIC MAY BE IDENTIFIED BY THE PART NUMBER DECAL ON THE SIDE, AND BY THE CHORE-TIME LOGO ON THE FACE.



Part No. 30606
PHOTOHELIC



THE UPDATED CIRCUIT BOARD MAY BE IDENTIFIED BY THE PART NUMBER DECAL.

P/N 30607A

Contact your nearby Chore-Time distributor or representative for additional parts and information.

Chore-Time Equipment, A Division of CTB, Inc.
P.O. Box 2000, Milford, Indiana 46542-2000 U.S.A.

MV1002A-693