

Conversion Solutions™

Dry Feeders for Pigs

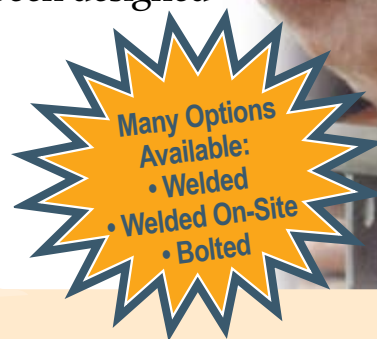
CHORE-TIME®



Easy-to-Use
Patented Feeder
Adjustment –
Now with More
Settings

Feeders designed for management simplicity

Pig feeders should help simplify the management of your pigs as they grow. With that goal in mind, Chore-Time's GENERATION 4™ Nursery, Wean-Finish and Finish Feeders have been designed to help you to save hours in clean-out and feeder adjustment time as well as to prevent feed waste. These dry feeders can be used in the center of the pen or as fence-line feeders.



Product Features and Advantages

- Clearly-marked numerical index settings eliminate guesswork in making feeder gate adjustments – now featuring 16 individual settings for precision feeding.
- All sidewall flanges are formed outward for a stronger, easier-to-clean feeder.
- More head space on all feeders.
- Feeder is manufactured from 304 Series stainless steel.
- Metal edges are safety hemmed to minimize exposure.
- Less than nine seconds are needed to adjust feeder gates on entire feeder.
- Fewer bolts to work loose.
- Optional drop tube holder helps secure the feed drop tube from an overhead fill system.

Improved trough design reduces waste and aids cleaning

Trough lip heights are sized for better pig access to feed – 4.25 in. (108 mm) on finisher and wean-finish models

Innovative Trough Profile for Finish and Wean-Finish Feeders

Reverse incline on feed trough lip helps prevent feed waste

Easy-to-clean feed trough lip flange also adds strength

V-shaped bottom drains feed-clogging moisture away from feed dispensing area

Update older feeders, too!

Convert older STACO® Feeders (and many competitive feeders) to Chore-Time's patented numerical feed adjustment indexing system. Update your feeders to:

- Permit faster feeder adjustments that are also easier to read at a glance.
- Improve employee training, communication, and feeder management.
- Eliminate damaged or knuckle-busting adjustment cranks.

Patented Feeder Adjustment Retrofit Kit



Wean-to-finish feeders



Chore-Time's GENERATION 4™ Wean-Finish Feeders are designed for use in feeding pigs ranging in size from 15 to 320 lbs. (7 to 145 kg) and up to 10 pigs per eating space. These feeders offer the following additional features:

- 14-inch (356-mm) spacing is standard for all wean-finish feeders.
- Solid divider panels in feed trough reduce waste and increase durability.
- Rolled front edges on divider panels for pig comfort and added strength.

| Part No. WEAN-TO-FINISH | Model* | Length | | Width | | Height | | Feed Capacity** | |
|----------------------------|---|--------|------|--------|-----|--------|-----|-----------------|-----|
| | | Inches | mm | Inches | mm | Inches | mm | Pounds | kg |
| ST32738-18 | WFTDH-2 | 28.25 | 718 | 25 | 635 | 34 | 864 | 244 | 111 |
| ST32451-18 | WFTDH-3 | 42.25 | 1073 | 25 | 635 | 34 | 864 | 367 | 167 |
| ST32443-18 | WFTDH-4 | 56.25 | 1429 | 25 | 635 | 34 | 864 | 489 | 222 |
| ST32459-18 | WFTDH-5 | 70.25 | 1784 | 25 | 635 | 34 | 864 | 611 | 277 |
| ST32053 | Drop Tube Holder for double-sided Wean-Finish feeders | | | | | | | | |
| ST32595-18 | WFTSH-1 | 14.25 | 362 | 16 | 406 | 34 | 864 | 68 | 31 |
| ST32737-18 | WFTSH-2 | 28.25 | 718 | 16 | 406 | 34 | 864 | 159 | 72 |
| ST32523-18 | WFTSH-3 | 42.25 | 1073 | 16 | 406 | 34 | 864 | 238 | 108 |
| ST32524-18 | WFTSH-4 | 56.25 | 1429 | 16 | 406 | 34 | 864 | 317 | 144 |
| ST32470-18 | WFTSH-5 | 70.25 | 1784 | 16 | 406 | 34 | 864 | 369 | 180 |
| ST32098 | Drop Tube Holder for single-sided Wean-Finish feeders | | | | | | | | |

*Descriptions for model codes: **WF** = Wean-Finish, **T** = Tall, **H** = Heavy duty, **S** = Single-sided feeding, **D** = Double-sided feeding, and **Numbers 1-5** = Number of feed positions per side.

**Feed capacities are based on a density of 42 pounds per cubic foot (673 kilograms per cubic meter).



Chore-Time's GENERATION 4™ Finisher Feeders are designed to feed pigs ranging in size from 50 to 300 lbs. (23 to 136 kg) and up to five pigs per eating space.



Finisher feeders

| Part No. FINISHER | Model* | Length | | Width | | Height | | Feed Capacity** | |
|----------------------|--|--------|------|--------|-----|--------|-----|-----------------|-----|
| | | Inches | mm | Inches | mm | Inches | mm | Pounds | kg |
| ST33028 | FD-3 | 30.25 | 768 | 25 | 635 | 34 | 864 | 262 | 119 |
| ST33030 | FD-4 | 40.25 | 1022 | 25 | 635 | 34 | 864 | 349 | 158 |
| ST33036 | FD-5 | 50.25 | 1277 | 25 | 635 | 34 | 864 | 437 | 198 |
| ST33038 | FD-6 | 60.25 | 1530 | 25 | 635 | 34 | 864 | 524 | 238 |
| ST33039 | FD-7 | 70.25 | 1784 | 25 | 635 | 34 | 864 | 611 | 277 |
| ST32053 | Drop Tube Holder for double-sided Finisher feeders | | | | | | | | |
| ST33027 | FS-3 | 30.25 | 768 | 16 | 406 | 34 | 864 | 170 | 77 |
| ST33029 | FS-4 | 40.25 | 1022 | 16 | 406 | 34 | 864 | 226 | 103 |
| ST33033 | FS-5 | 50.25 | 1277 | 16 | 406 | 34 | 864 | 283 | 128 |
| ST33037 | FS-6 | 60.25 | 1530 | 16 | 406 | 34 | 864 | 340 | 154 |
| ST33048 | FS-7 | 70.25 | 1784 | 16 | 406 | 34 | 864 | 396 | 180 |
| ST32098 | Drop Tube Holder for single-sided Finisher feeders | | | | | | | | |

*Descriptions for model codes: **F** = Finisher, **S** = Single-sided feeding, **D** = Double-sided feeding, and **Numbers 3-7** = Number of feed positions per side.

**Feed capacities are based on a density of 42 pounds per cubic foot (673 kilograms per cubic meter).

Nursery feeders



Chore-Time's GENERATION 4™ Nursery Feeders are designed for use in feeding pigs ranging in size from 10 to 100 lbs. (5 to 45 kg) and up to five pigs per eating space on nursery feeders and six per eating space on tall nursery feeders. Early-wean guards are standard on all nursery feeders. Nursery fence-mount feeders are also available.

| Part No. NURSERY | Model* | Length | | Width | | Height | | Feed Capacity** | |
|---------------------|---|--------|------|--------|-----|--------|-----|-----------------|-----|
| | | Inches | mm | Inches | mm | Inches | mm | Pounds | kg |
| ST32968 | NTD-3 | 24.25 | 616 | 19.5 | 495 | 31 | 787 | 107 | 49 |
| ST32969 | NTD-4 | 30.25 | 768 | 19.5 | 495 | 31 | 787 | 143 | 65 |
| ST32630 | NTD-5 | 36.25 | 921 | 19.5 | 495 | 31 | 787 | 179 | 81 |
| ST32970 | NTD-6 | 42.25 | 1073 | 19.5 | 495 | 31 | 787 | 214 | 97 |
| ST32643 | NTD-7 | 48.25 | 1226 | 19.5 | 495 | 31 | 787 | 250 | 113 |
| ST33495 | ND-3 | 18.25 | 464 | 17.4 | 442 | 25 | 635 | 80 | 36 |
| ST33006 | ND-4 | 24.25 | 616 | 17.4 | 442 | 25 | 635 | 107 | 49 |
| ST33012 | ND-5 | 30.25 | 768 | 17.4 | 442 | 25 | 635 | 133 | 60 |
| ST33047 | ND-6 | 36.25 | 921 | 17.4 | 442 | 25 | 635 | 160 | 73 |
| ST33015 | ND-7 | 42.25 | 1073 | 17.4 | 442 | 25 | 635 | 187 | 85 |
| ST33041 | ND-8 | 48.25 | 1226 | 17.4 | 442 | 25 | 635 | 214 | 97 |
| ST32078 | Drop Tube Holder for double-sided Nursery feeders | | | | | | | | |
| ST32971 | NTS-3 | 24.25 | 616 | 12.5 | 318 | 31 | 787 | 90 | 41 |
| ST32972 | NTS-4 | 30.25 | 768 | 12.5 | 318 | 31 | 787 | 120 | 54 |
| ST32973 | NTS-5 | 36.25 | 921 | 12.5 | 318 | 31 | 787 | 150 | 68 |
| ST32974 | NTS-6 | 42.25 | 1073 | 12.5 | 318 | 31 | 787 | 181 | 82 |
| ST32975 | NTS-7 | 48.25 | 1226 | 12.5 | 318 | 31 | 787 | 211 | 96 |
| ST33496 | NS-3 | 18.25 | 464 | 11.7 | 297 | 25 | 635 | 63 | 29 |
| ST33005 | NS-4 | 24.25 | 616 | 11.7 | 297 | 25 | 635 | 84 | 38 |
| ST33010 | NS-5 | 30.25 | 768 | 11.7 | 297 | 25 | 635 | 105 | 48 |
| ST33046 | NS-6 | 36.25 | 921 | 11.7 | 297 | 25 | 635 | 125 | 57 |
| ST33013 | NS-7 | 42.25 | 1073 | 11.7 | 297 | 25 | 635 | 146 | 66 |
| ST33306 | NS-8 | 48.25 | 1226 | 11.7 | 297 | 25 | 635 | 167 | 76 |
| ST32099 | Drop Tube Holder for single-sided Nursery feeders | | | | | | | | |

*Descriptions for model codes: **N** = Nursery, **T** = Tall, **S** = Single-sided feeding, **D** = Double-sided feeding, and **Numbers 3-8** = Number of feed positions per side.

**Feed capacities are based on a density of 42 pounds per cubic foot (673 kilograms per cubic meter).



PigTek Pig Equipment Group
 A Division of CTB, Inc.
 Milford, IN USA
 Call 800.341.1039 or 574.658.4101
 PigTek.net or choretimehog.com
 info@PigTek.net