

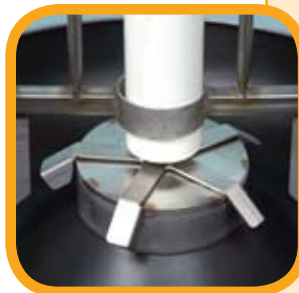
## AQUA TUBE® Round Pig Feeder



The CHORE-TIME® AQUA TUBE® Round Feeder provides pig producers with a state-of-the-art round feeder for use in finish or wean-finish operations. These wet/dry feeders are designed for use with pigs ranging in size from 12 to 280 lbs. (5 to 125 kg).

### Product Features and Advantages

- Wet/dry capability to provide feed preference:
  - Dry feed on dinner plate.
  - Wet feed in trough.
- 50 pigs per feeder.
- Stand alone or fence line installation.
- 100-pound (45-kg) feed capacity.
- Handles a full range of feeds.
- Easy feed and water access for pigs of all sizes.
- Feed reservoir cannot be contaminated from feed trough.
- Heavy 30-inch (762-mm) diameter polyethylene feeder pan.
- Stainless steel and plastic construction offers corrosion-resistance and durability.
- Clearly-marked settings offer convenient and precise feeder level adjustment.
- Mounting brackets are included.
- Easy installation and cleaning.



Easy-to-use feed dispenser



Easy drinker nipple access



Precise feeder adjustment



AQUA TUBE® Round Feeder (ST-65069)

For the distributor nearest you, call the PigTek Customer Fulfillment Department at 800-341-1039 or use the Distributor Finder on [www.PigTekAmericas.com](http://www.PigTekAmericas.com).



**PigTek Pig Equipment Group**  
A Division of CTB, Inc.  
Milford, IN USA  
Call 800.341.1039 or 574.658.4101  
[PigTek.net](http://PigTek.net) or [choretimehog.com](http://choretimehog.com)  
[info@PigTek.net](mailto:info@PigTek.net)