

POSIFLO™ Feed Flow Control

POSIFLO™ (60 Hz.): 7000-1

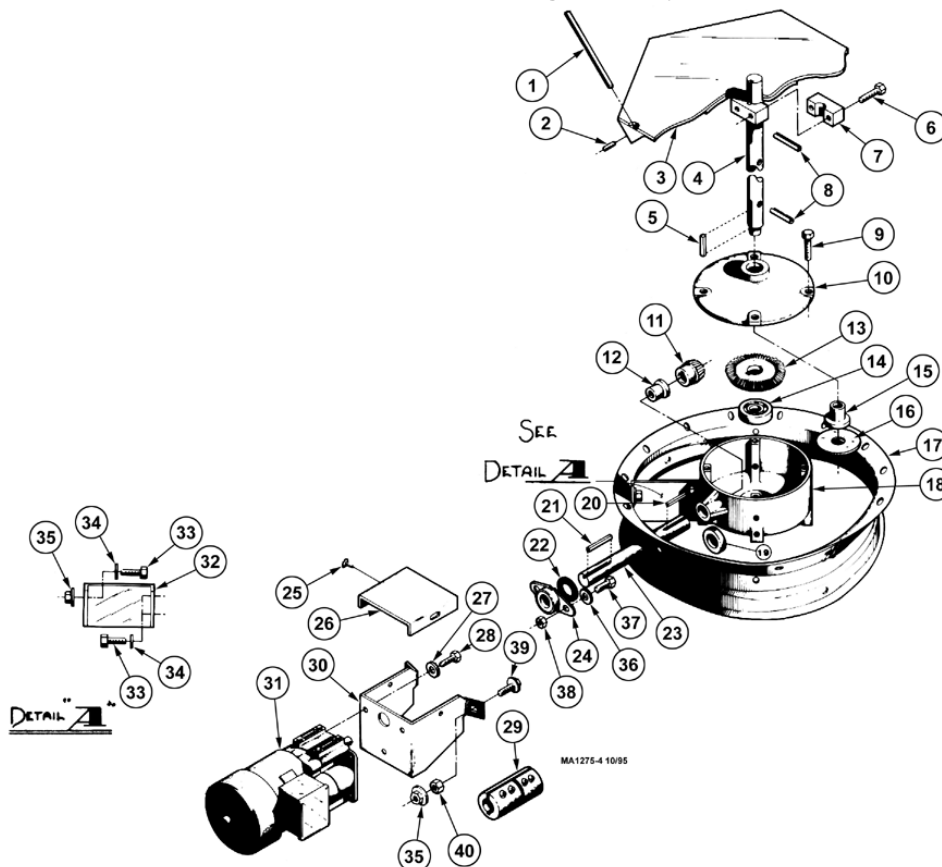
Manufactured until January 1995.

POSIFLO™ (50 Hz.): 7000-2

Item	Description	Part No	Part No	Description	Part No
1	Wiper Rod	5970	**22	Rubber Seal	7147
2	Setscrew	2094	23	Input Shaft	5957
3	Six Sided Disk	6594	**24	Flange Mount Bracket	6984
*4	Output Shaft	6988	**25	10-32 x 5/8" Screw	6727
*5	1/4 x 1-1/8" Sq. Key	2419-2	26	Motor Mount Cover	6997
6	5/16-18 x 1-1/2" Hx Hd Bolt	4412-2	**27	1/4" Lock Washer	1334
7	Clamp Half (left hand)	6986-2	**28	1/4-20 x 1/2" Hx Hd Screw	1487
**8	Spring Pin	6022	**29	Sleeve Coupling	6983
*9	1/4-20 x 1" Hx Hd Bolt	2029	**30	Motor Mount Bracket	6995
*10	Gear Housing Cover	6994	31	Gear Motor (230 V, 60 Hz)	9735
*11	Pinion Gear	5956		Gear Motor (230 V, 50 Hz)	7079
*12	Bronze Bearing	2967-6	32	Brace	6989
*13	Bevel Gear	5954	**33	5/16-18 x 1" Hx Hd Bolt	4412-7
*14	Single Bearing	5953	**34	5/16" Sealing Washer	8491
*15	Bronze Bearing	2967-7	**35	5/16-18 Flange Nut	8490
*16	Flat Washer	2955-4	**36	1/4" Sealing Washer	8492
17	Bin Collar	---	**37	1/4-20 x 3/4" Hx Hd Bolt	1133
*18	Gear Housing	6990	**38	1/4-20 Hx Nut	751
19	Set Collar	1386	**39	5/16-18 x 3/4" Bin Seal Bolt	8489
20	3/16 x 1" Sq. Key	2112-1	**40	5/16-18 Hx Nut	2145
21	3/16 x 3/4" Sq. Key	2112-4			

*Components of Parts Package 8488.

**Components of Housing Assembly 6990.



POSIFLO™ (Split Collar):7000-3

Manufactured until January 1995.

Item	Description	Part No	Item	Description	Part No
1	Wiper Rod	5970	22	Rubber Seal	7147
2	Six Sided Disk	6594	23	Input Shaft	5957
3	Setscrew	2094	24	Flange Mounting Bracket	6984
*4	Output Shaft	8645	25	10-32 x 5/8" Screw	6727
*5	1/4 x 1-1/8" Sq. Key	2419-2	26	Motor Mount Cover	6997
6	5/16-18 x 1-1/2" Hx Hd Bolt	4412-2	27	1/4" Lock Washer	1334
7	Clamp Half (left hand)	6986-2	28	1/4-20 x 1/2" Hx Hd Screw	1487
**8	Spring Pin	6022	29	Coupling Half	5958
*9	1/4-20 x 1" Hex Hd Bolt	2029	29A	Coupling Insert	5959
*10	Gear Housing Cover	6994	30	Motor Mount Bracket	6995
*11	Pinion Gear	5956	31	Gear Motor (230 V, 60 Hz)	9735
*12	Bronze Bearing	2967-6	*32	Mounting Bracket (R.H.)	8637-1
*13	Bevel Gear	5954		Mounting Bracket (L.H.)	8637-2
*14	Single Bearing	5953	33	5/16-18 x 1" Hx Hd Bolt	4412-7
*15	Bronze Bearing	2967-7	34	5/16" Sealing Washer	8491
*16	Flat Washer	2955-4	35	5/16-18 Flange Nut	8490
17	Bin Collar	6205	36	1/4" Sealing Washer	8492
*18	Gear Housing	6993	37	1/4-20 x 3/4" Hx Hd Bolt	1133
19	Set Collar	1386	38	1/4-20 Hx Nut	751
20	3/16 x 1" Sq. Key	2112-1	39	5/16-18 x 3/4" Bin Seal Bolt	8489
21	3/16 x 3/4" Sq. Key	2112-4	40	5/16-18 Hx Nut	2145

*Components of Parts Package 8488.

