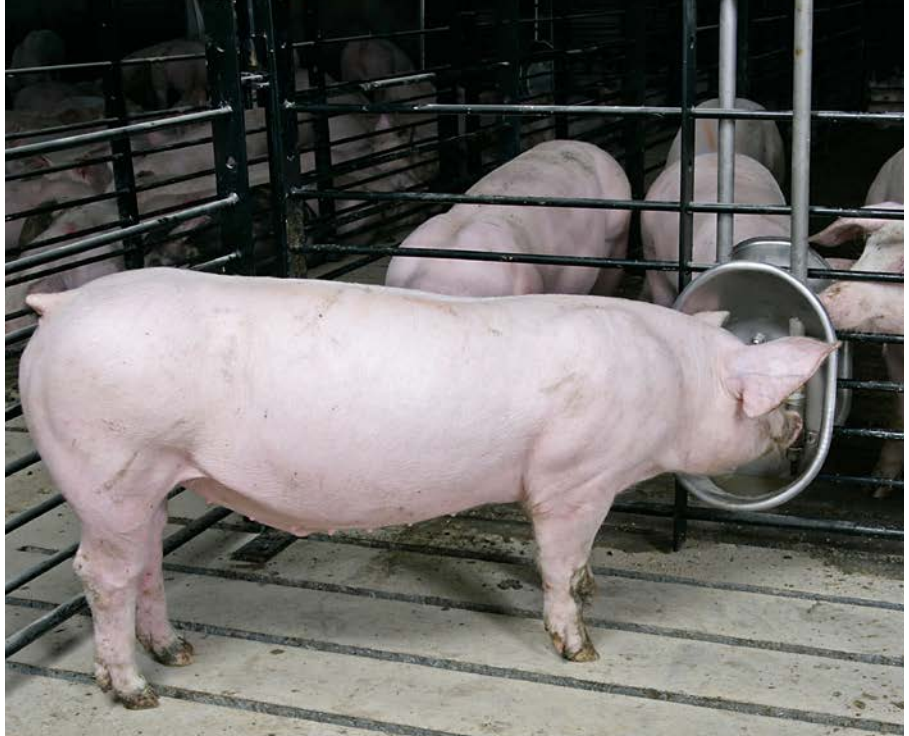


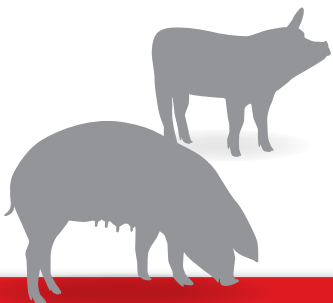
**CHORE-TIME**<sup>®</sup>



## DRINKING CUPS FOR PIGS

DESIGNED WITH SUPERIOR QUALITY TO  
BOOST PIG HEALTH AND WATER SAVINGS

- › Up to 70% water savings
- › Nipple position maximizes control of water
- › Cup design helps to reduce medication waste



# DRINKING CUPS FOR PIGS

Chore-Time's Drinking Cups for pigs are the most effective water cup on the market. They feature an advanced, pig-friendly shape that is designed around the way pigs naturally drink water. The nipple position maximizes control with up to 70% water savings. This is done by minimizing water overflow and reducing medication waste.

## Durable and Easy to Manage

- > Durable stainless steel cup construction for long life.
- > Easy clean-up of drinking cups offers labor and management savings.
- > Pipes available - Pipes are available in 10-inch (254-mm) and 48-inch (1219-mm) lengths. Featuring two mounting tabs. The 48-inch long pipes are bent slightly to prevent contact with and wear from the fence.



< Nursery Cup



< Pipe Bracket



Wean-to-Market >  
and Market Pig  
Cup



Universal Stainless >  
Steel Backing  
Plate used to  
mount cups



## Designed to Perform

- > Attracts pigs to water: The cup's design maintains a small pocket of fresh water to attract even the youngest pigs to the cup so they drink more.
- > Water is fresher: Water systems are totally enclosed to keep water fresh and protect it from contamination.
- > Models available: Cups are available for pigs of all ages and sizes.

## Long-Lasting and Pig-Friendly

- > Each Chore-Time Drinking Cup is a durable, corrosion-resistant, one-piece stainless steel unit. These pig-friendly cups are formed with smooth sides and have no sharp edges.

