



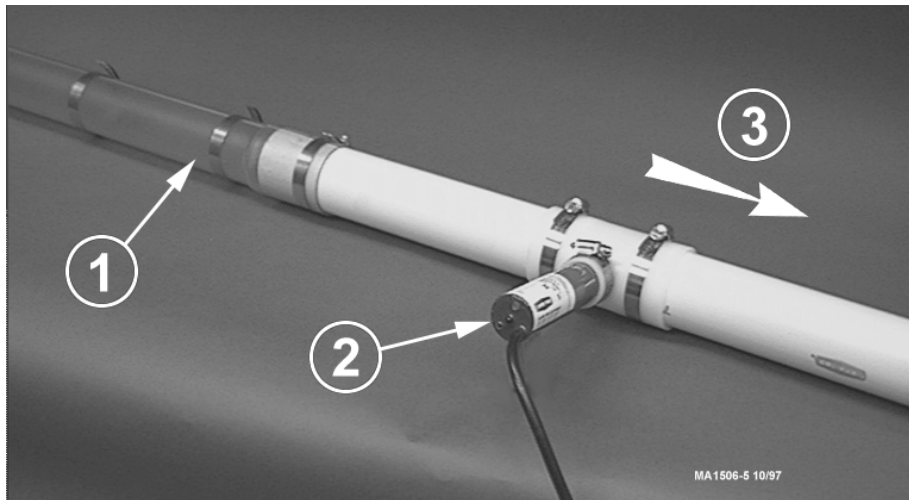
40508 Proximity Sleeve Switch with 40511 Override Timer



The 40508 Proximity Sleeve Switch is for use on the Multiflo™ Circulating Feeding Systems. The switch serves as the control to allow system operation and shut-off without unnecessary recirculation.

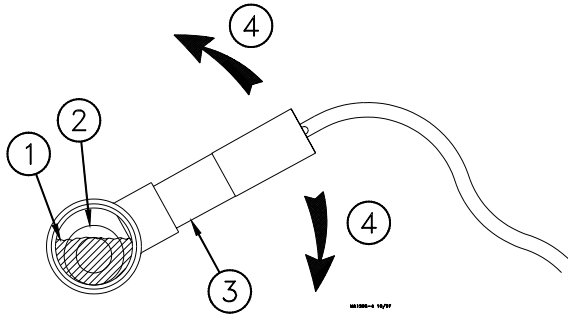
Installation

Locate the Proximity Sleeve Switch on the inlet side of the Multiflo Boot, after the Service Section.



Key	Description
1	Service Section
2	Proximity Sleeve Switch
3	Direction of Feed Flow

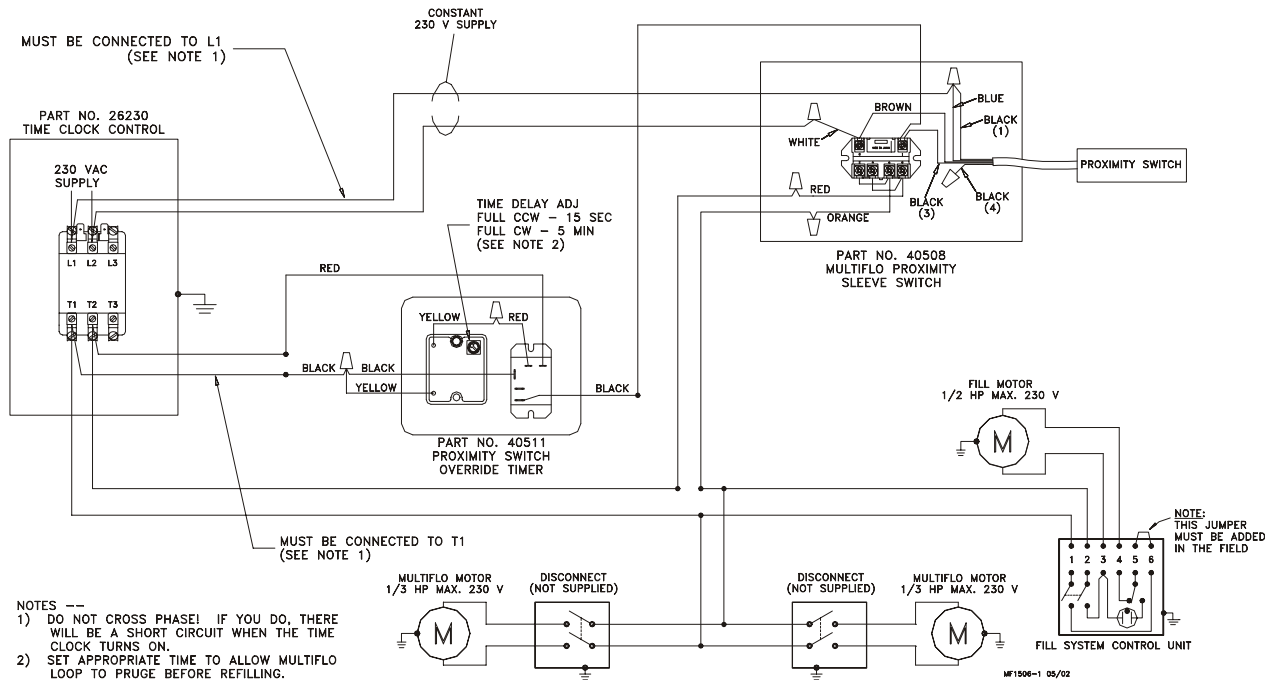
The Proximity Sleeve Switch senses feed levels inside the Auger Tube and should be adjusted to sense the level provided by the fill system used.



Key	Description
1	Feed Level
2	Multiflo Auger
3	Proximity Switch
4	Rotate To Adjust Feed Level

System Wiring:

MULTIFLO SYSTEM CONTROL WIRING
USING PROXIMITY SLEEVE SWITCH
WITH OVERRIDE TIMER

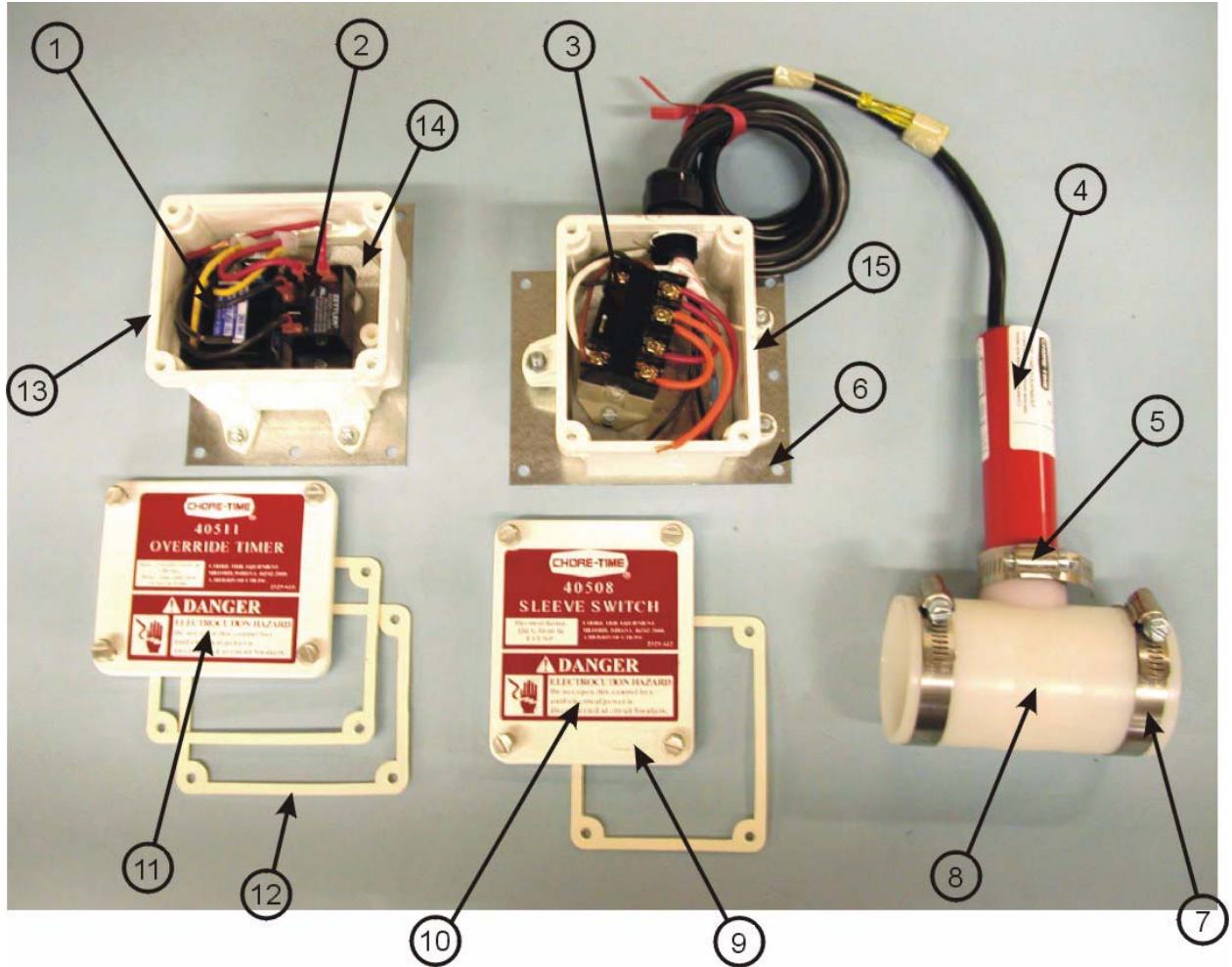


System Operation:

The Multiflo System using the Proximity Sleeve Switch is designed to fill the circuit with feed starting at the Multiflo Boot, and continuing around the circuit until the feed reaches the Proximity Sleeve Switch. The Proximity Sleeve Switch then shuts off the Multiflo Circuit Motor or Motors and the Fill System Motor (on a single drop system).

The next filling should begin with a fully charged Fill System and Multiflo™ Loop System. The Override Timer allows the Fill System and Multiflo Loop System to start (with feed in front of the Proximity Sleeve Switch) by bypassing the Proximity Sleeve Switch, allowing the Multiflo Loop System to purge itself of feed and begin it's sequential refilling. The Override Timer should be set (15 seconds to 5 minutes) to allow for purging of any feed in the system that might circulate back onto the Proximity Sleeve Switch before the full circuit is satisfied with feed. This amount of time should be adjusted to accomodate depopulated pens, crates, etc.

**Proximity Sleeve Switch Part No. 40508
and Override Timer Part No. 40511**



Item	Description	Part No.
1	On Delay Timer	24209
2	Relay	34702
3	DPST Relay	34654
4	Prox Switch	36867
5	1-7/8" Clamp	3527
6	Relay Mount PLate	28701
7	2-3/4" Clamp	8643
8	Proximity Switch Sleeve	39157
9	Cover	6776
10	Danger Decal	2529-612
11	Danger Decal	2529-611
12	Switch box gasket	6777
13	Switch box	7841
14	Box plate	24312