

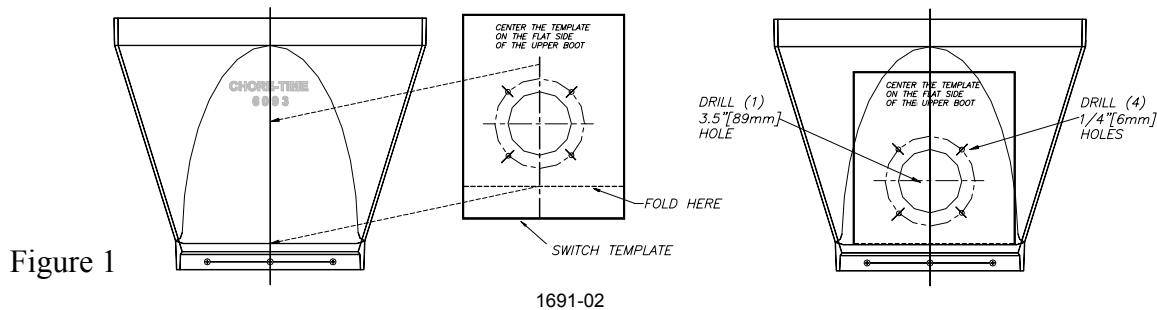


46910 SENSOR PLUS™ Panel Switch

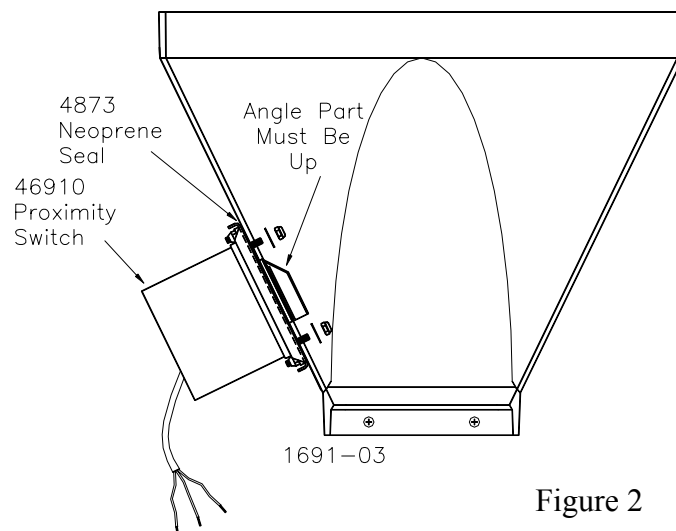
The SENSOR PLUS™ Panel Switch has numerous applications. It can be utilized as a level switch to shut off a fill system motor if the feed bin runs empty of feed (see wiring diagram, page 3). It can also be utilized as a level switch in feed screener applications to replace mechanical version switches (see wiring in cage screener manual). See Auto Bin Slide Instruction for applications operating Automatic Bin Slide Actuators.

Installation

1. Using the provided template (page 2), mark and drill the holes for the Panel Switch. See **Figure 1**.



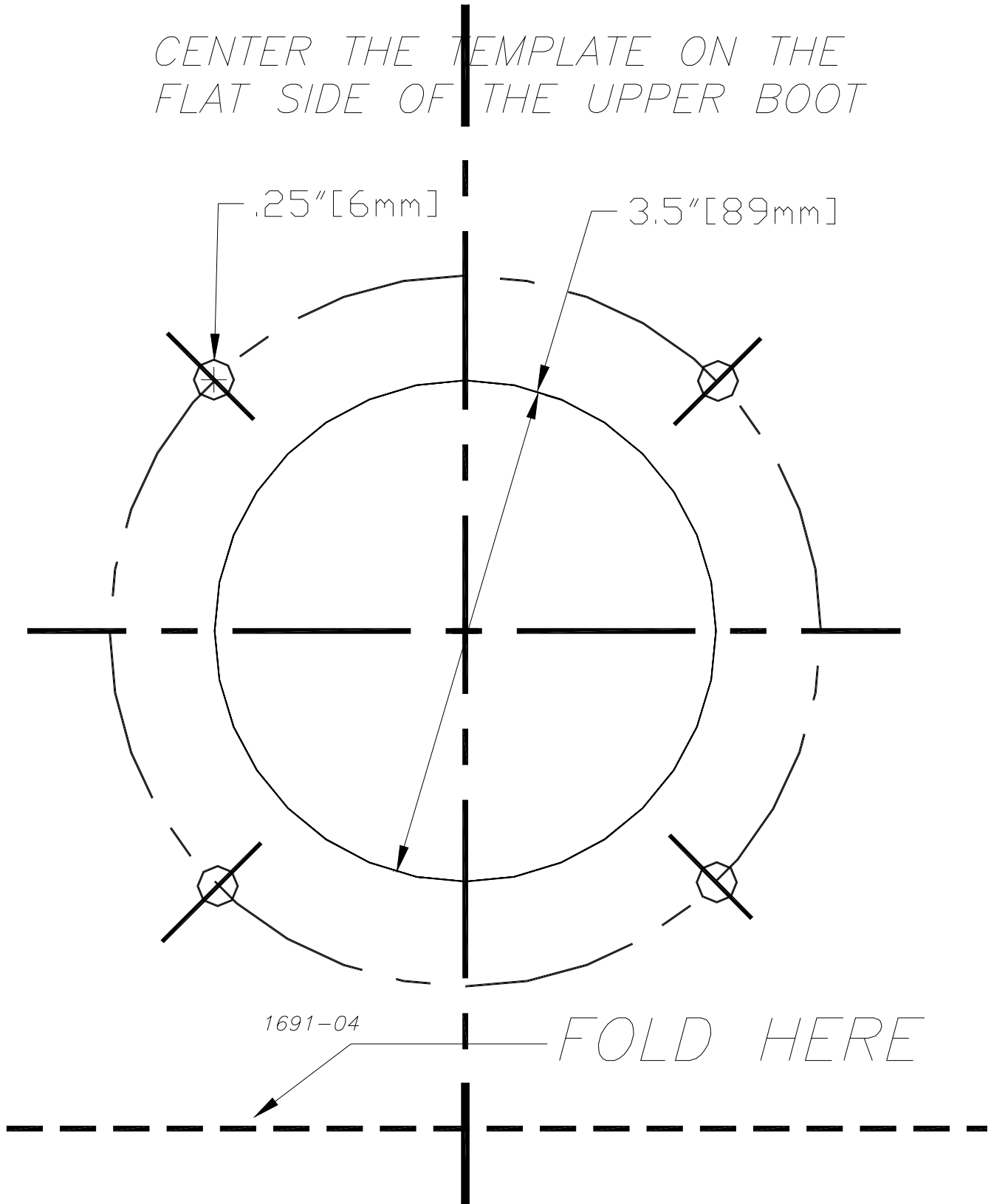
2. **Proximity Switch installation,** assemble the 4873 Neoprene Seal onto the Switch Unit and insert the (4) switch studs through the holes that were just drilled in Section #3 and assemble the (4) washers and (4) #10 hex nuts on the inside of the Upper Boot. Note: the angle part of the red switch must be on top when mounting in the Upper Boot See **Figure 2**. Tighten the hex nuts securely.



3. Wire the switch according to the wiring diagram. See Page 3.

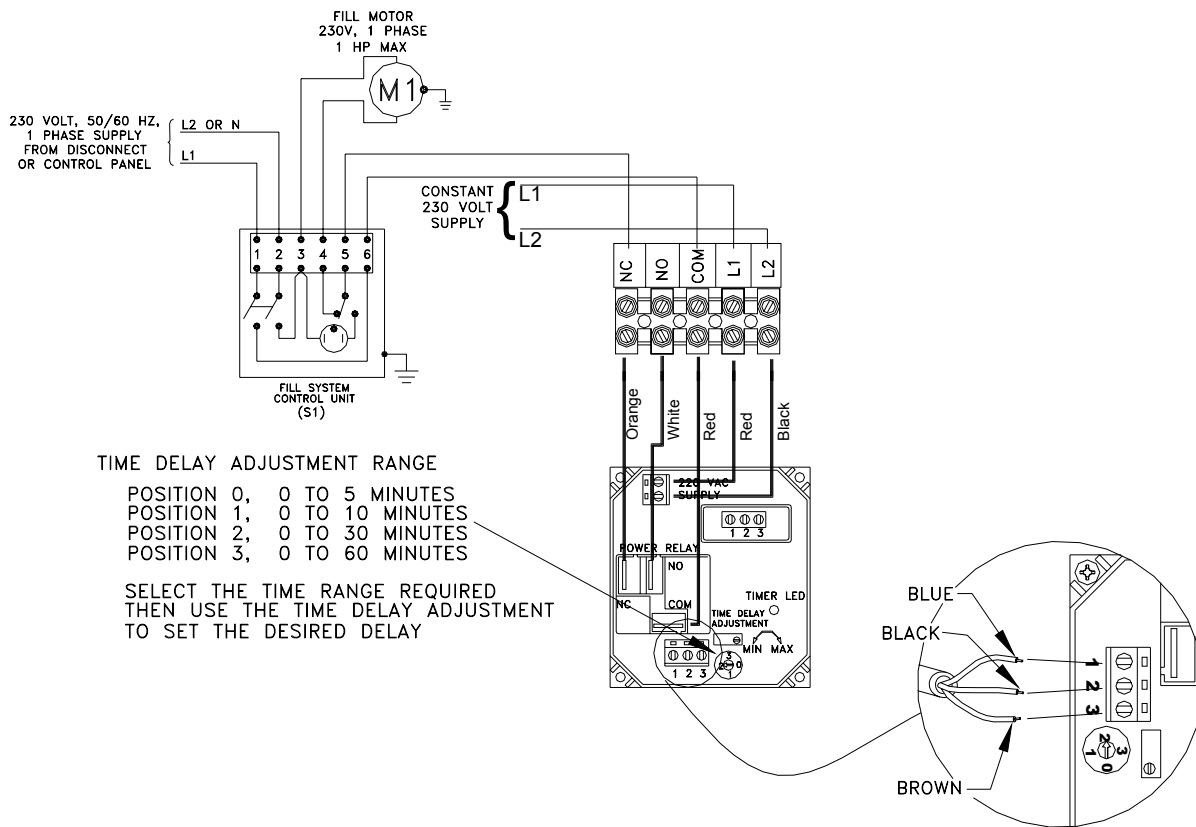
Switch Mounting Template

*CENTER THE TEMPLATE ON THE
FLAT SIDE OF THE UPPER BOOT*



Wiring Diagram

Panel switch used as feed bin level switch



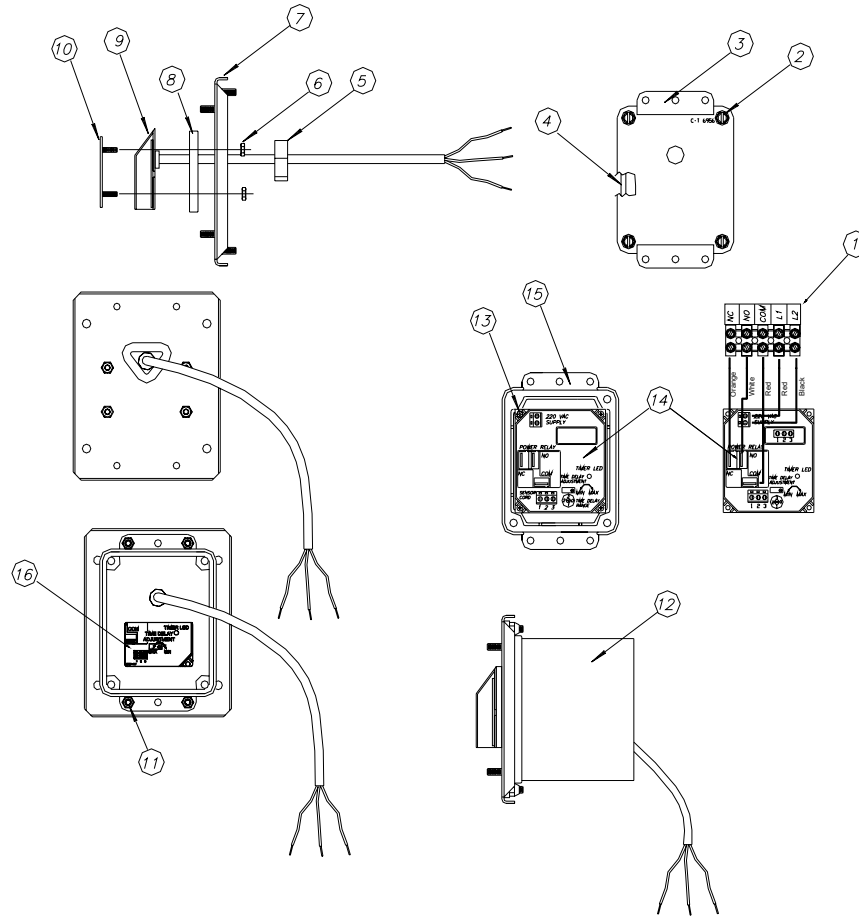
TIME DELAY ADJUSTMENT RANGE

- POSITION 0, 0 TO 5 MINUTES
- POSITION 1, 0 TO 10 MINUTES
- POSITION 2, 0 TO 30 MINUTES
- POSITION 3, 0 TO 60 MINUTES

SELECT THE TIME RANGE REQUIRED
THEN USE THE TIME DELAY ADJUSTMENT
TO SET THE DESIRED DELAY

SENSOR CONNECTING DETAIL

46910 Panel Switch



Ref. No.	Part no.	Description	Ref. No.	Part No.	Description
1	34925-5	Terminal Strip	9	46266	Level Sensor
2	28075	Screw, HXWH #10	10	46314	Sensor Retainer
3	46912	Terminal Box Cover	11	6963	Lock Nut 10-32
4	6777	Switch Box Gasket	12	42610	Box
5	6968-1	Gasket	13	35493	Screw, Phil Panh
6	771	Nut, HX 6-32	14	46266	Sensor Level Switch
7	46911	Switch Box Mount	15	6956	Cover
8	46546	Sensor Spacer	16	2526-409	Decal



**Made to work.
Built to last.™**

Contact your nearby Chore-Time distributor or representative for additional parts and information.

Chore-Time Equipment, A Division of CTB, Inc.
P.O. Box 2000, Milford, Indiana 46542-2000 U.S.A.
Phone: 574-658-4101 • E-Mail: ctb@ctbinc.com

Printed in the U.S.A.