



# 27761 Hopper Level Control

## International Version

The 27761 Hopper Level Control is designed for use with any conveying system that carries free-flowing feed. The control automatically starts and stops the fill system as feed level against the paddle changes.

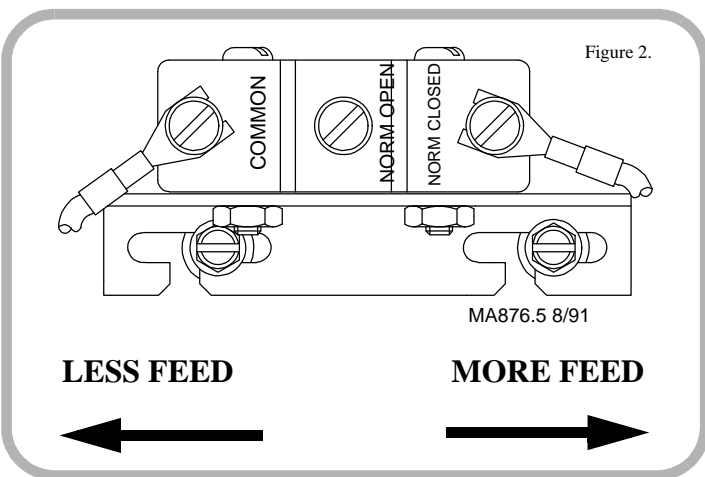
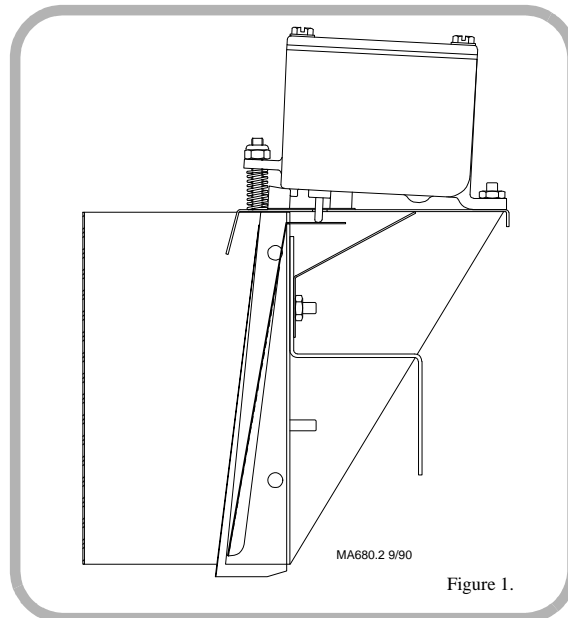
Switches may be placed in more than one hopper to assure that no hopper empties before the control unit hopper requires feed. All switches must be wired in parallel so that any one switch can start the system.

### Installation

Install the control in the last hopper which is located at the end of the delivery system. Mount it low so the feed level will be lower in that hopper than in the others. The lower feed level will cause the system to start frequently enough to maintain the feed level in every hopper and provide a reservoir for the feed in the fill system if another hopper calls for feed. Position the feed drop tube to deliver feed to the center and near the top of the hopper, in front of the paddle. Position the drop tubes and switches high in the other hoppers so that they fill but do not overflow. See page 2 of this instruction.

Mount the Hopper Level Control vertically, as shown in Figure 1, to assure free movement of the switch paddle. Drill two 9/32" (7.2 mm) holes at the desired location. Use the bracket as a guide to determine the hole spacing. Fasten the bracket in place with the hardware supplied. Install the Control in the Mounting Bracket Assembly. The control may be removed for switch adjustment or for house clean-out.

Note: The Mounting Bracket can be relocated to the studs underneath the Paddle Shield to lower the Hopper Level Control approximately 2" (50 mm) in the hopper.



**Use ONLY**  
**CHORE-TIME**  
**Replacement Parts.**

### Switch & Paddle Adjustment

The Control Switch is factory adjusted for both Switch Sensitivity and Paddle Position. It is set for medium to light weight feed (less than 40 lb/ft<sup>3</sup> or 64 kg/m<sup>3</sup>).

**IMPORTANT:** External Adjustment nut is for paddle positioning only. Switch sensitivity can only be adjusted internally.

### Paddle Positioning

1. Place switch in a vertical position with **NO FEED** in front of paddle.
2. Turn external nut **CLOCKWISE** until switch actuates (clicks).
3. Turn external nut back **COUNTER-CLOCKWISE** until switch de-actuates (clicks).
4. Turn external nut an additional **TWO** full turns **COUNTER-CLOCKWISE**.

### Switch Sensitivity Adjustment

1. Loosen the two #6 slotted, hex washer head screws holding the switch bracket in place.
2. Slide the switch and bracket assembly--  
--**RIGHT** to make the switch **LESS SENSITIVE**.  
--**LEFT** to make the switch **MORE SENSITIVE**.  
See Figure 2.
3. Re-tighten the screws (do not over-tighten).
4. **IMPORTANT:** Re-adjust paddle position whenever switch sensitivity is adjusted.

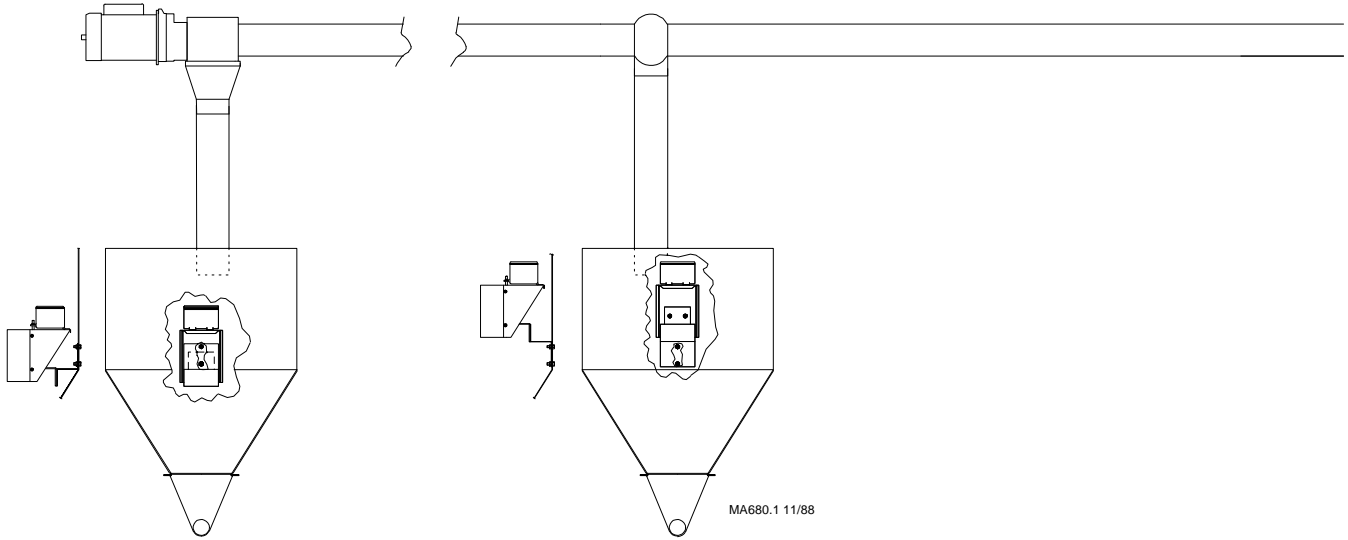
### Wiring

The 14550 Hopper Level Control is a single pole, double throw switch with wiring leads connected so that the circuit is complete (closed) when there is no feed against the paddle. The circuit is broken (open) when there is feed against the paddle.

The 14550 Hopper Level Control is rated for up to a 1 H.P., 230 VAC motor. If a motor larger than 1 H.P., 230 VAC is used, a contactor must be installed to control the current to the switch.

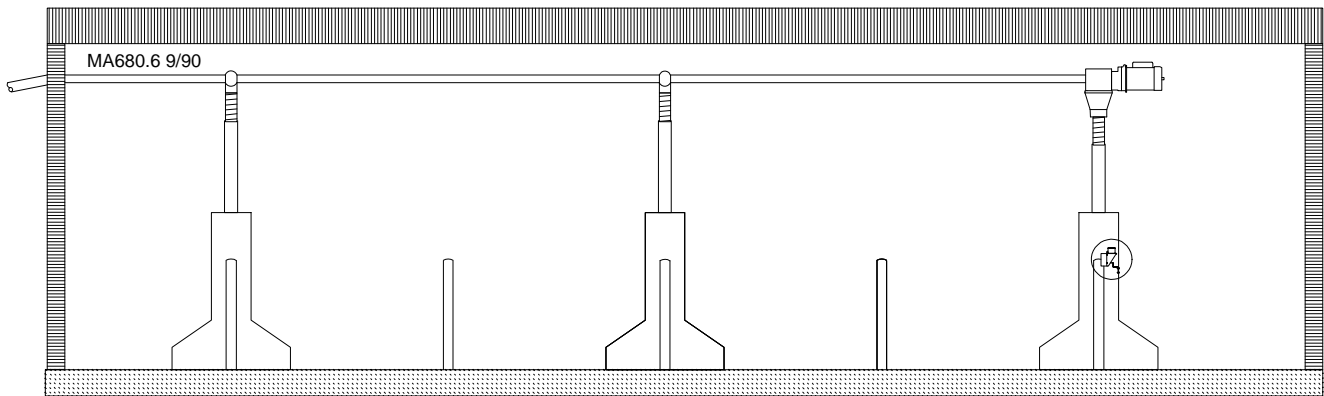
Wire according to the applicable diagram on pages 4 & 5.

## Poultry Application



**Install the Hopper Level Control in the last hopper located at the end of the delivery System. Mount it low.**

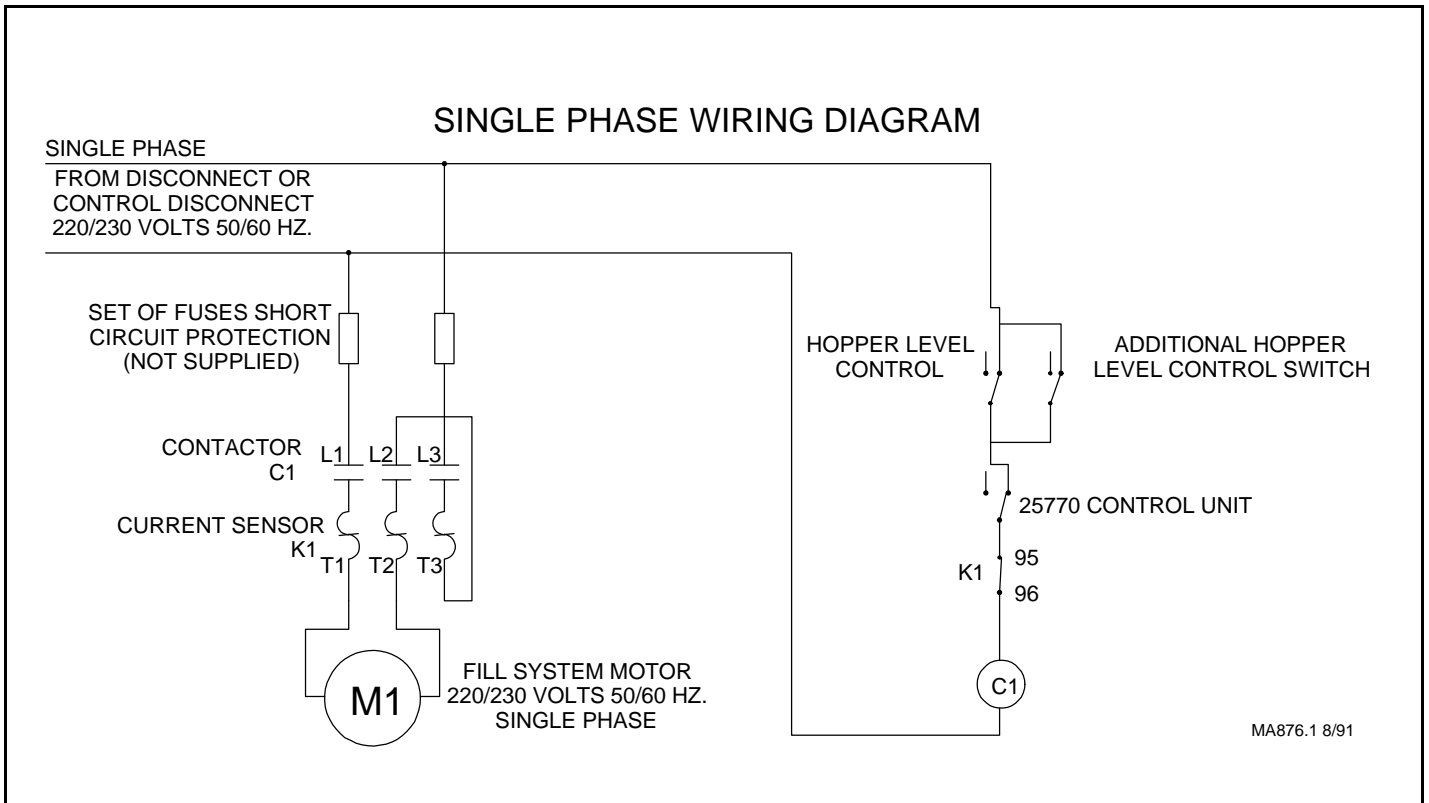
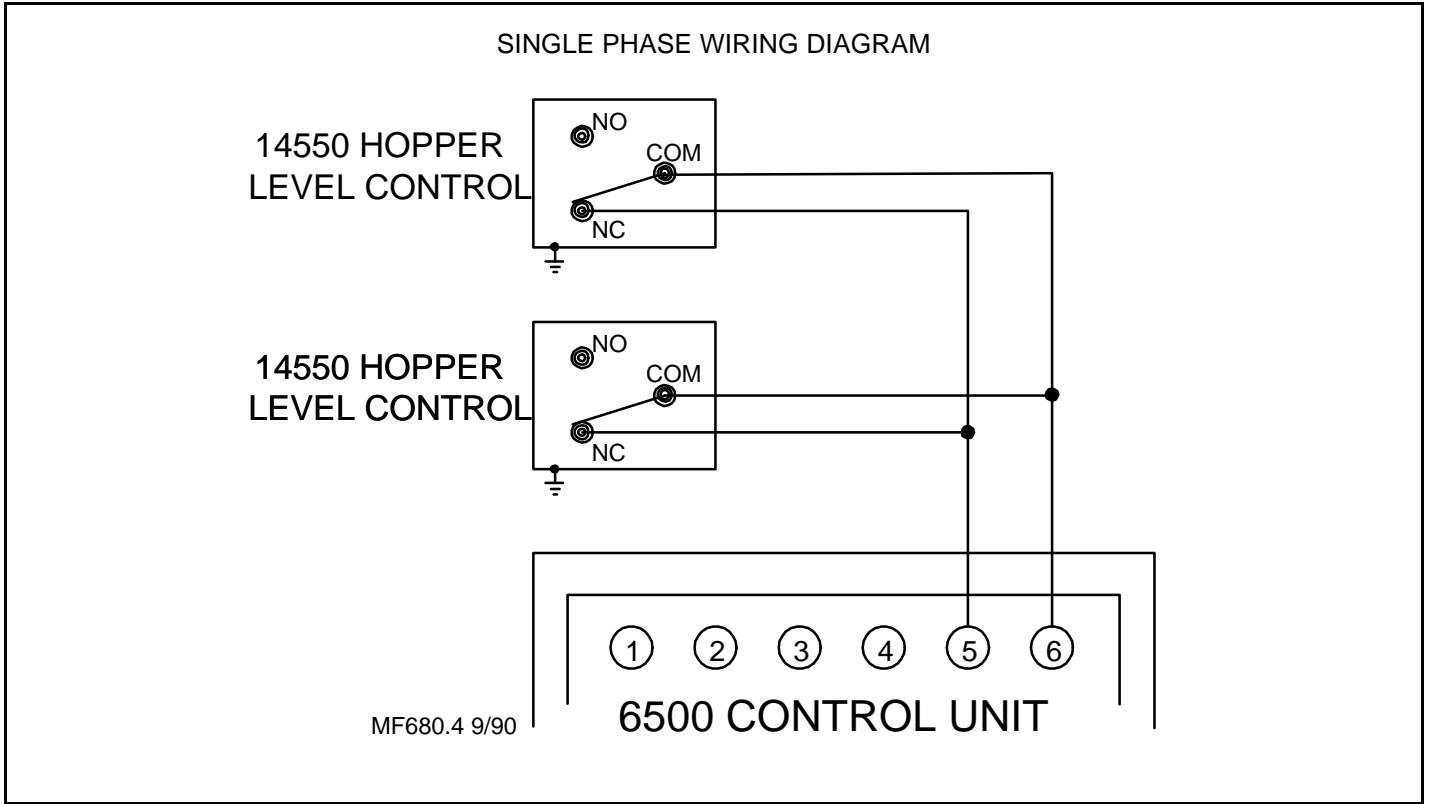
## Hog Application



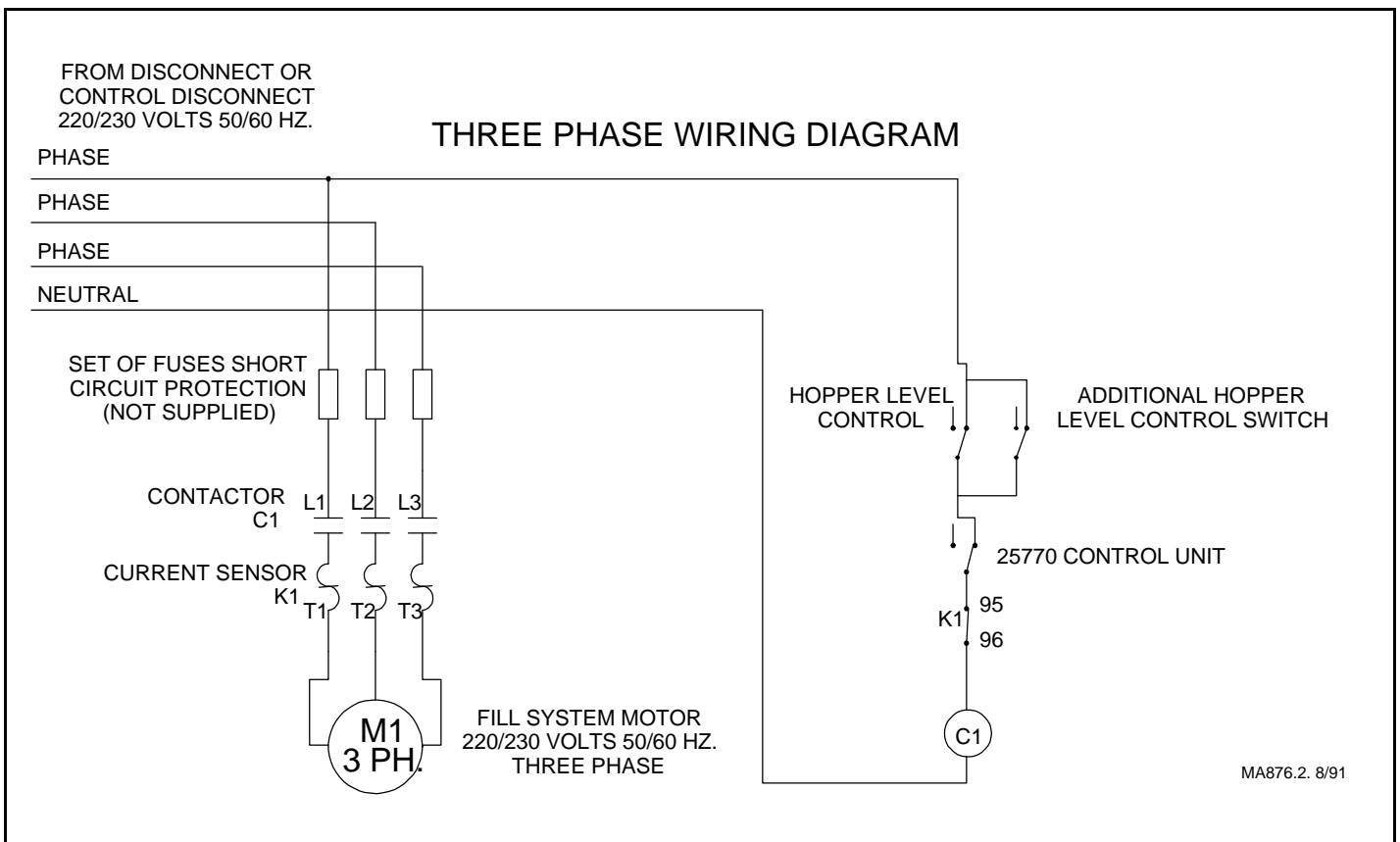
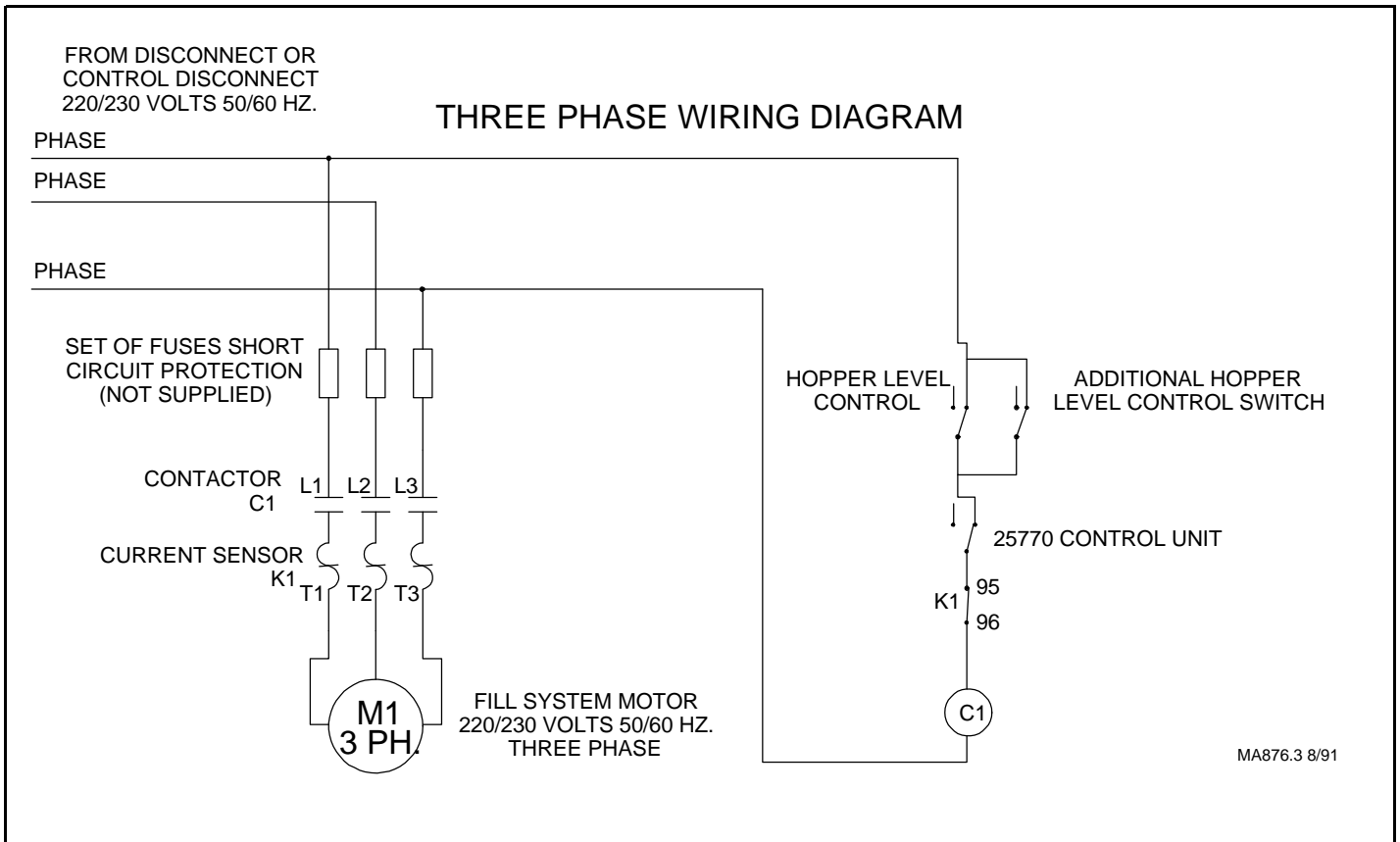
**NOTE:** In poultry applications, switches may be placed in more than one hopper to assure that no hopper empties before the control unit hopper requires feed. All switches must be wired in parallel so that any one switch can start the system.  
In most hog installations, the control is installed in the last hopper that is located at the end of the delivery system.

## Notes & Sketches

## WIRING DIAGRAMS: Single Phase

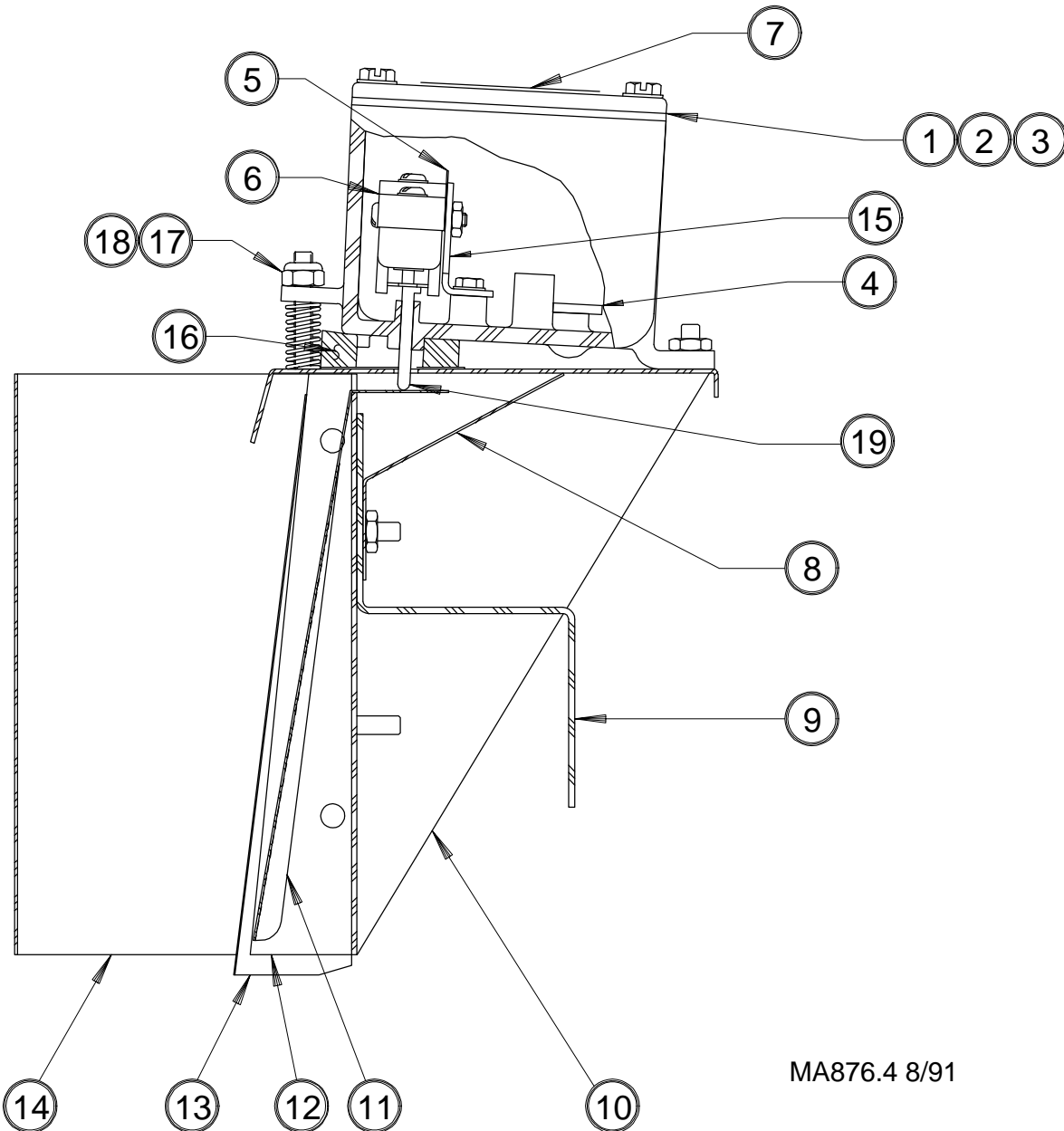


## WIRING DIAGRAMS: Three Phase



# 27761 Hopper Level Control (International)

<u>Item</u>	<u>Description</u>	<u>Part No.</u>	<u>Item</u>	<u>Description</u>	<u>Part No.</u>
1	Gasket	6777	11	Paddle	14519
2	Switch Box Cover	6776	12	Switch Frame Assembly	14498
3	Switch Box	7841	13	Diaphragm	28157
4	2 Terminal Block	27845-2	14	High Differential Shield	7808
5	Switch Insulation	1907-5	15	Switch Bracket	7068
6	S.P.D.T. Switch	7069	16	Gasket	6968-1
7	Danger Decal	2527-35	17	Spring	6972
8	Paddle Shield	24059	18	10-32 Lock Nut	6963
9	Switch Brace Bracket	2703	19	Pin	6775
10	Switch Frame Assembly	14499	--	Mounting Bracket Assembly	2911



MA876.4 8/91

## WARRANTY INFORMATION

Chore-Time Equipment warrants each new product manufactured by it to be free from defects in material or workmanship for one year from the date of initial installation by the original purchaser. If such a defect is found by Chore-Time to exist within the one year period, Chore-Time will, at its option, (a) repair or replace such product free of charge, F.O.B. the factory of manufacture, or (b) refund to the original purchaser the original purchase price, in lieu of such repair or replacement.

Additional extended warranties are herewith provided to the original purchaser as follows:

1. RLX Fans, less motors, for three years from date of installation.
2. Poultry feeder pans that become unusable within five years from date of installation. Warranty prorated after three years usage.
- \*3. Rotating centerless augers, excluding applications involving High Moisture Corn (exceeding 18%), for ten years from date of installation. Applications involving High Moisture Corn are subject to a one year warranty.
4. Chore-Time manufactured roll-formed steel auger tubes for ten years from date of installation.
5. Laying cages that become unusable within ten years. Warranty prorated after three years usage.
- \*6. ULTRAFLO® Auger and ULTRAFLO® Feed Trough (except ULTRAFLO® Trough Liners) are warranted for a period of five (5) years from date of original purchase against repeated breakage of the auger or wear-through of the feed trough.

Conditions and limitations:

1. The product must be installed and operated in accordance with instructions published by Chore-Time or warranty will be void.
2. Warranty is void if all components of a system are not supplied by Chore-Time.
3. This product must be purchased from and installed by an authorized Chore-Time dealer or certified representative thereof, or the warranty will be void.
4. Malfunctions or failure resulting from misuse, abuse, negligence, alteration, accident, or lack of proper maintenance shall not be considered defects under this warranty.
5. This warranty applies only to systems for the care of poultry and livestock. Other applications in industry or commerce are not covered by this warranty.

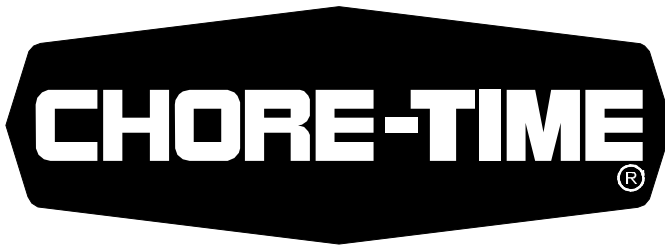
Chore-Time shall not be liable for any consequential or special damage which any purchaser may suffer or claim to have suffered as a result of any defect in the product. "Consequential" or "special damages" as used herein include, but are not limited to, lost or damaged products or goods, costs of transportation, lost sales, lost orders, lost income, increased overhead, labor and incidental costs and operational inefficiencies.

THIS WARRANTY CONSTITUTES CHORE-TIME'S ENTIRE AND SOLE WARRANTY AND CHORE-TIME EXPRESSLY DISCLAIMS ANY AND ALL OTHER WARRANTIES, INCLUDING, BUT NOT LIMITED TO, EXPRESS AND IMPLIED WARRANTIES AS TO MERCHANTABILITY, FITNESS FOR PARTICULAR PURPOSE SOLD AND DESCRIPTION OR QUALITY OF THE PRODUCT FURNISHED HEREUNDER.

Any exceptions to this warranty must be authorized in writing by an officer of the company. Chore-Time reserves the right to change models and specifications at any time without notice or obligation to improve previous models.

\*See separate "WARRANTY ADDITION" as to these products

CHORE-TIME EQUIPMENT, A Division of CTB, Inc.  
P.O. Box 2000, Milford, Indiana 46542-2000 U.S.A.



Made to work.  
Built to last.

Contact your nearby Chore-Time distributor or representative for additional parts and information.

Chore-Time Equipment, A Division of CTB, Inc.  
P.O. Box 2000, Milford, Indiana 46542-2000 U.S.A.

Printed in the U.S.A.